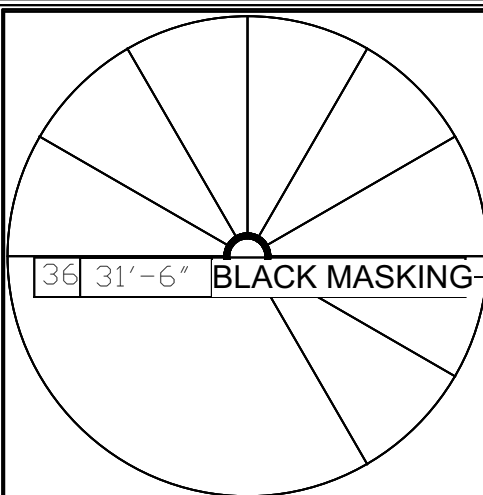


Groundplan Scale: 3/8" = 1'-0"

|                         |                          |
|-------------------------|--------------------------|
| <b>Summer and Smoke</b> |                          |
| Groundplan              | Date : 7/24/2021         |
| Baker Theatre           | Scale : Per Unit         |
| Director : Sarah Yorke  | <b>Sht-1</b><br>OF<br>12 |
| Designer : Chris Rees   |                          |
| Revisions :             |                          |



36 31'-6" BLACK MASKING

35 Drawn SL TAB  
34 27'-11"  
33 Drawn SR TAB  
32 27'-0" SKY PANELS

31 25'-9" SKY PANELS  
30 25'-4"  
29 24'-11"  
28 24'-5"  
27 23'-11"

26 22'-11"  
25 22'-5" BLACK MASKING  
24 21'-11"  
23 21'-4"

22 20'-10" IVY  
21 20'-3"

20 19'-4"

19 18'-4" IVY

18 17'-10"

17 16'-10"

16 15'-3" IVY

15 13'-10"

14 12'-10" WINDOWS/IVY

13 10'-11" WINDOWS/IVY

12 9'-6" BLACK MASKING

11 7'-9"

10 7'-3"

09 6'-8"

08 6'-3"

07 5'-9"

06 5'-3"

05 4'-9"

04 4'-4"

03 3'-9"

02 3'-3"

01 2'-5"

00 1'-11"

NOTE: OBSTRUCTION: Fire Pipes

PLASTER LINE

NOTE: OBSTRUCTION: Fire Pipe and Fire-curtain Rigging

CONDUIT PATHWAY  
ELECTRICAL SERVICE BOX

FLOOR POCKET  
TO BASEMENT

10'-5 3/4"

27'-3"

24'-7 5/8"

10'-7 5/8"

12'-6 7/8"

1'-9 3/8"

4 3/4"

8'-9 3/8"

7'-7 1/4"

7'-4 7/8"

6'-6"

1'-5 1/8"

2'-5 3/4"

### Summer and Smoke

Load In Groundplan

Date : 8.26.21

Baker Theatre

Scale : 1/2" = 1'-0"

Director : Sarah Yorke

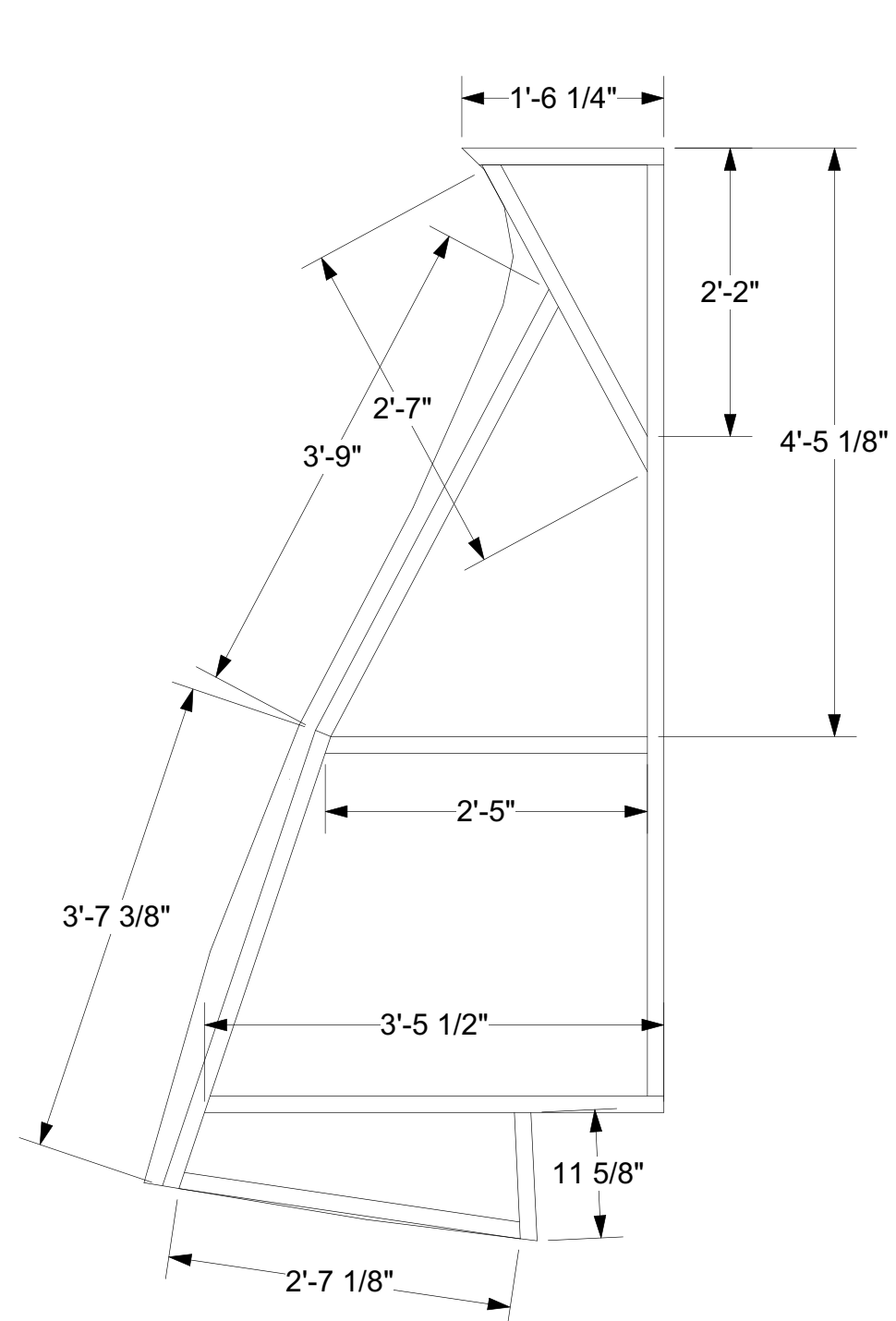
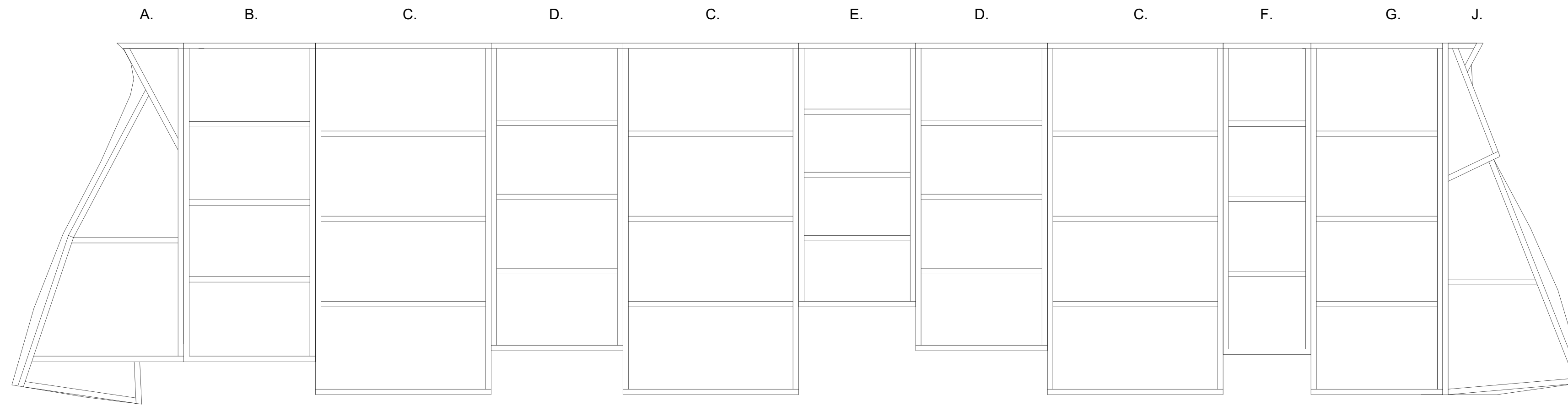
Designer : Chris Rees

Revisions :

# Sht-2

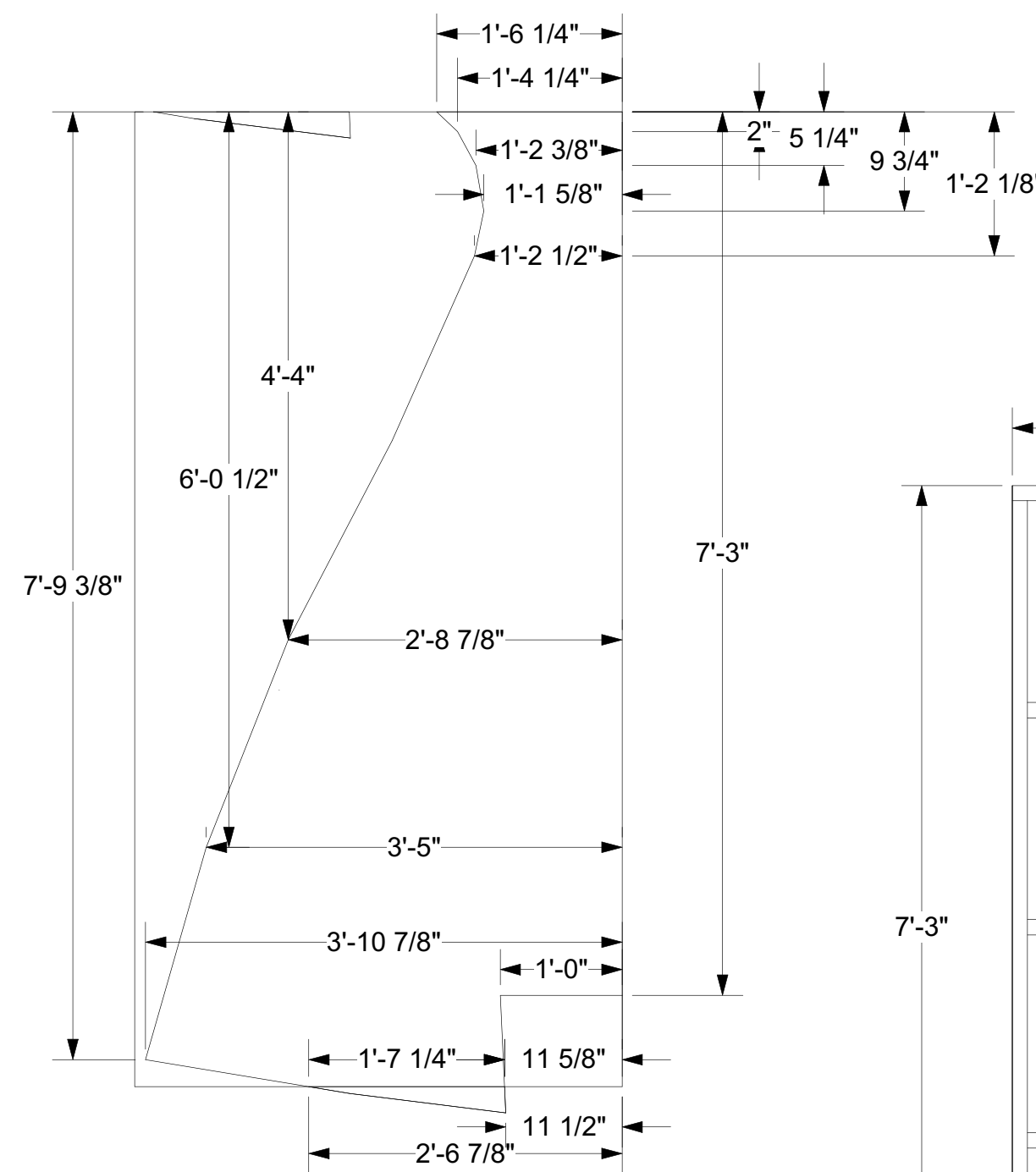
OF

# 12



SE. A. Framing Scale: 3/4" = 1'-0"

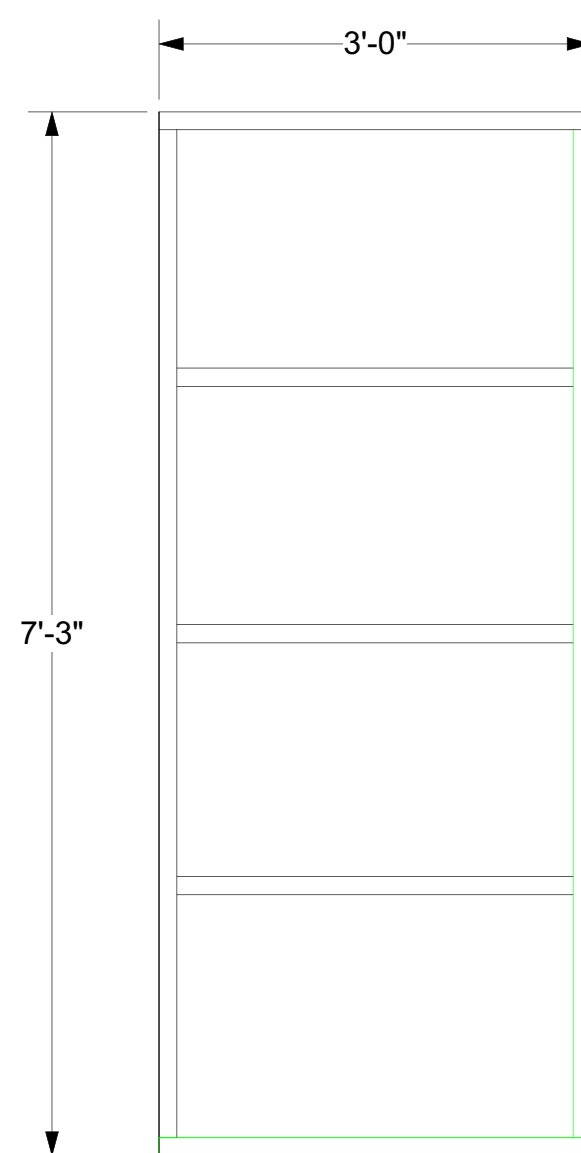
- Unit Notes**  
 1. Build 1  
 2. Cut Lid First, Frame to Lid



SE. A. Layout Scale: 3/4" = 1'-0"

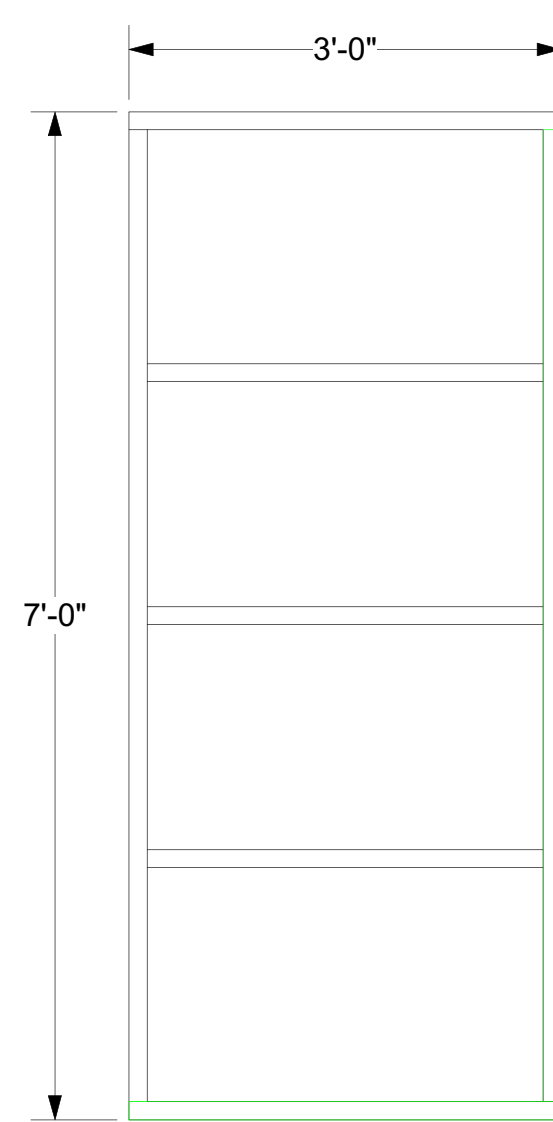
Stage Extension Detail Scale: 1/2" = 1'-0"

- Platform Index**  
 A. Custom SR Plug  
 B. 1 @ 3'-0" x 7'-3"  
 C. 3 @ 4'-0" x 8'-0"  
 D. 2 @ 3'-0" x 7'-0"  
 E. 2'-8" x 6'-0"  
 F. 2'-0" x 7'-0"  
 G. 3'-0" x 8'-0"  
 J. Custom SL Plug



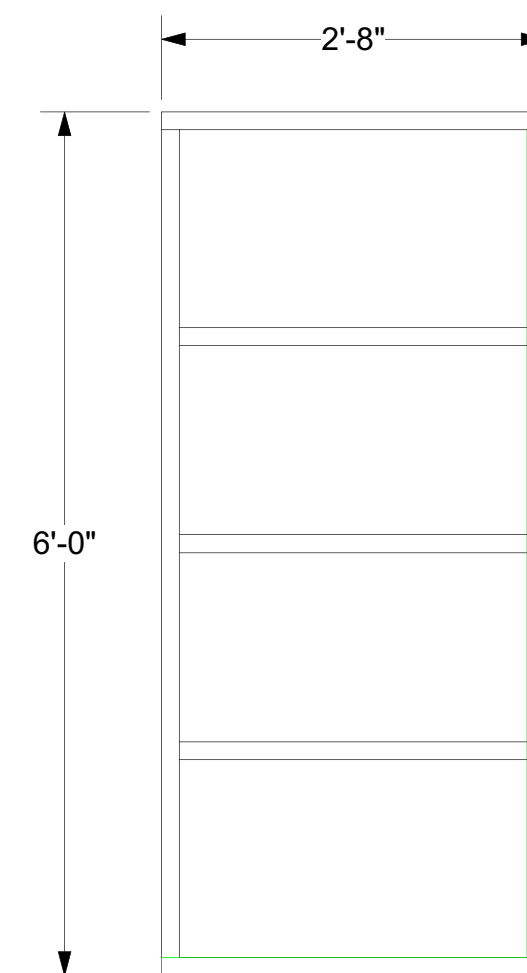
SE. B. Detail Scale: 3/4" = 1'-0"

- Unit Notes**  
 1. Modify 4'x8' Platform.  
 2. New 2x4 in Green  
 3. Build 1



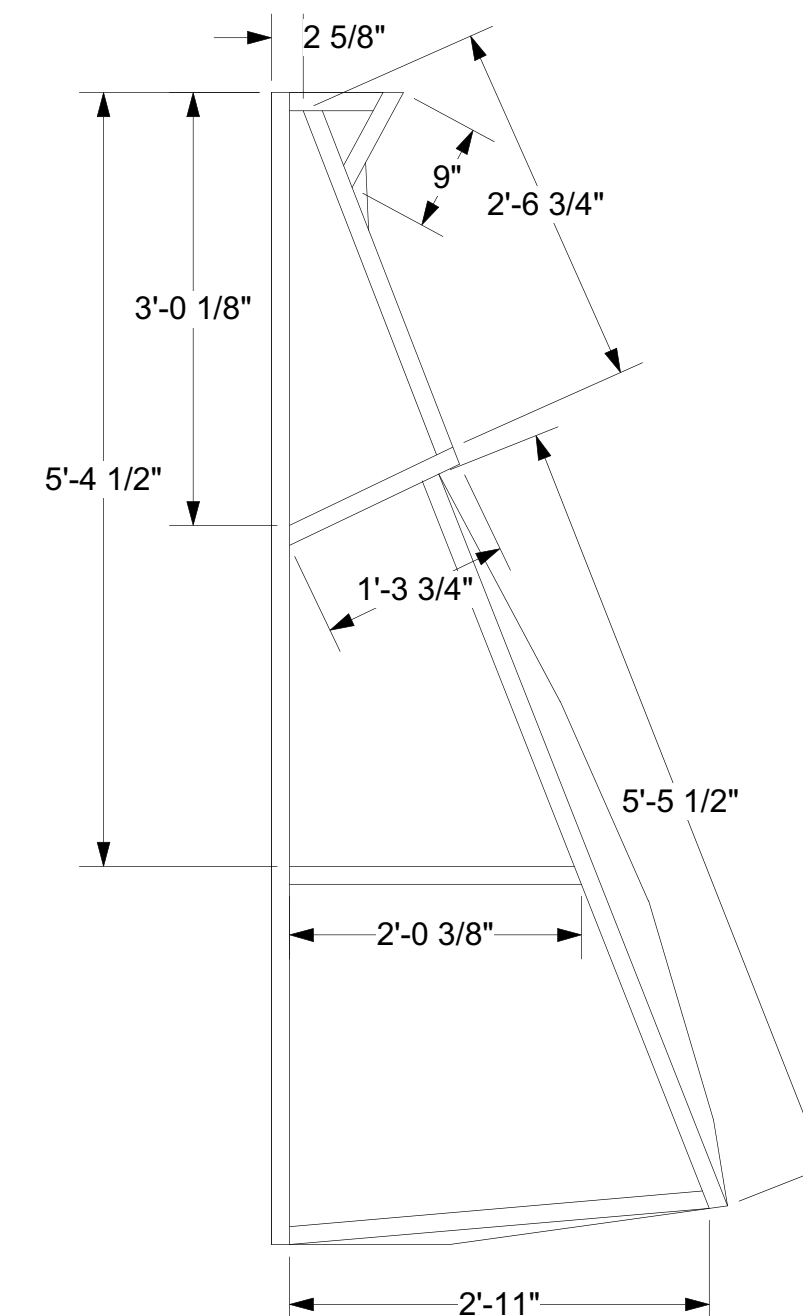
SE. D. Detail Scale: 3/4" = 1'-0"

- Unit Notes**  
 1. Modify 4'x8' Platform.  
 2. New 2x4 in Green  
 3. Build 2



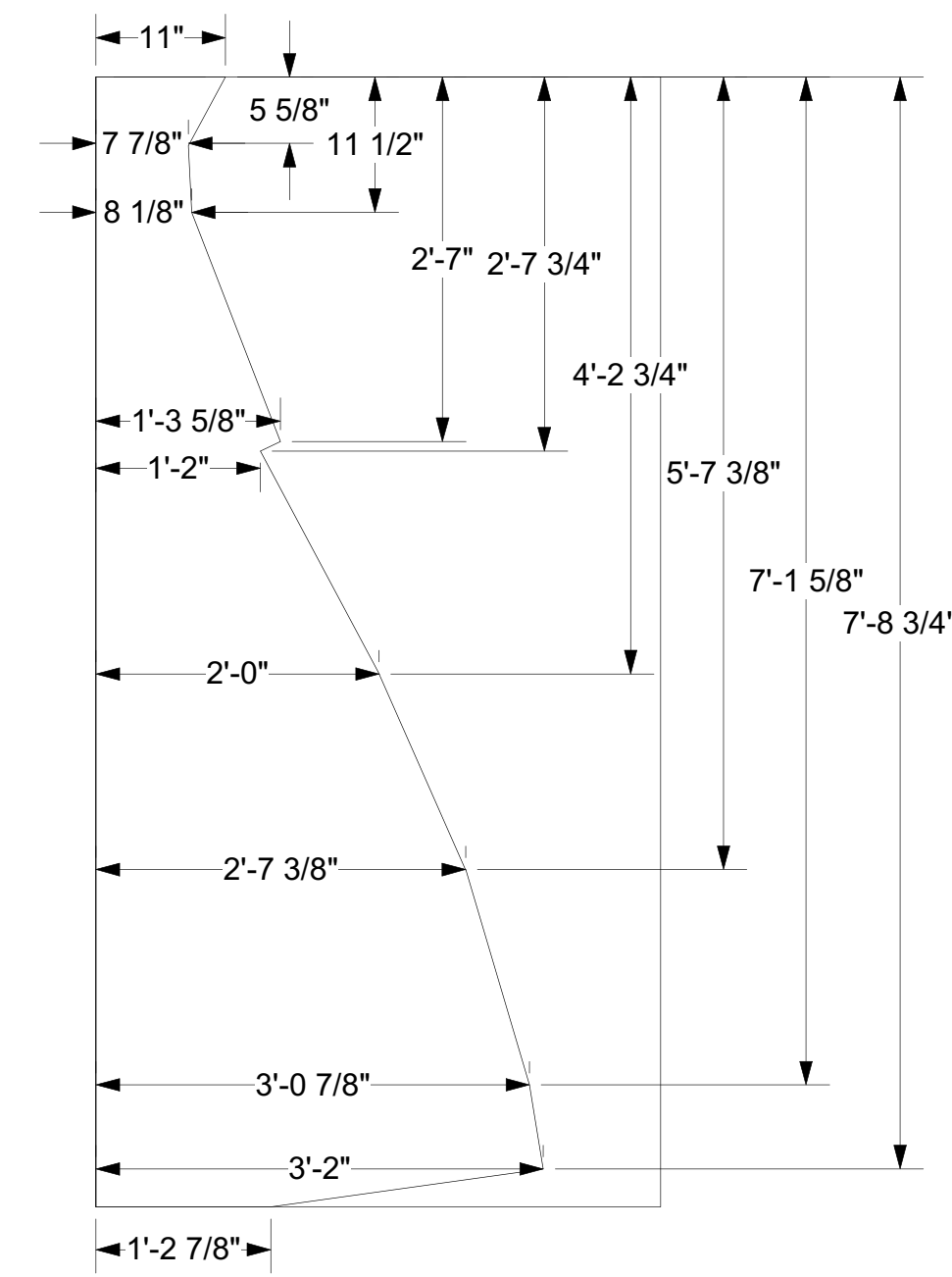
SE. E. Detail Scale: 3/4" = 1'-0"

- Unit Notes**  
 1. Modify 4'x8' Platform.  
 2. New 2x4 in Green  
 3. Build 1

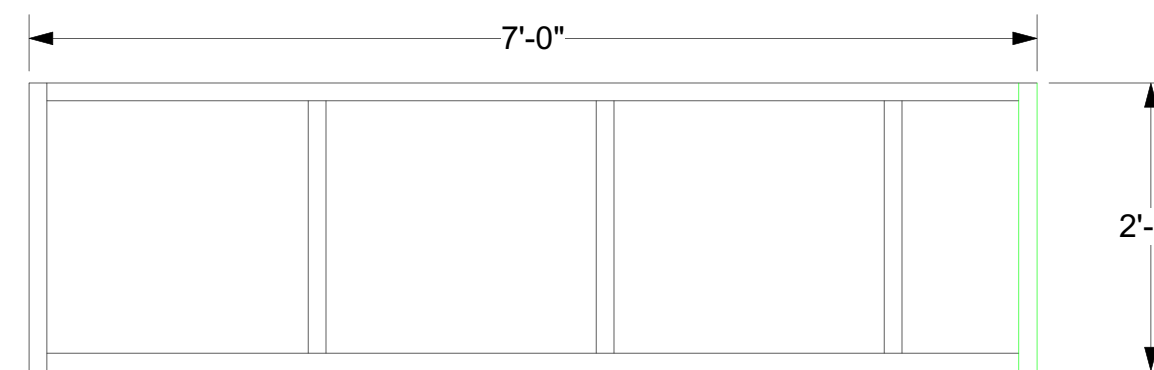


SE. J. Framing Scale: 3/4" = 1'-0"

- Unit Notes**  
 1. Build 1  
 2. Cut Lid First, Frame to Lid



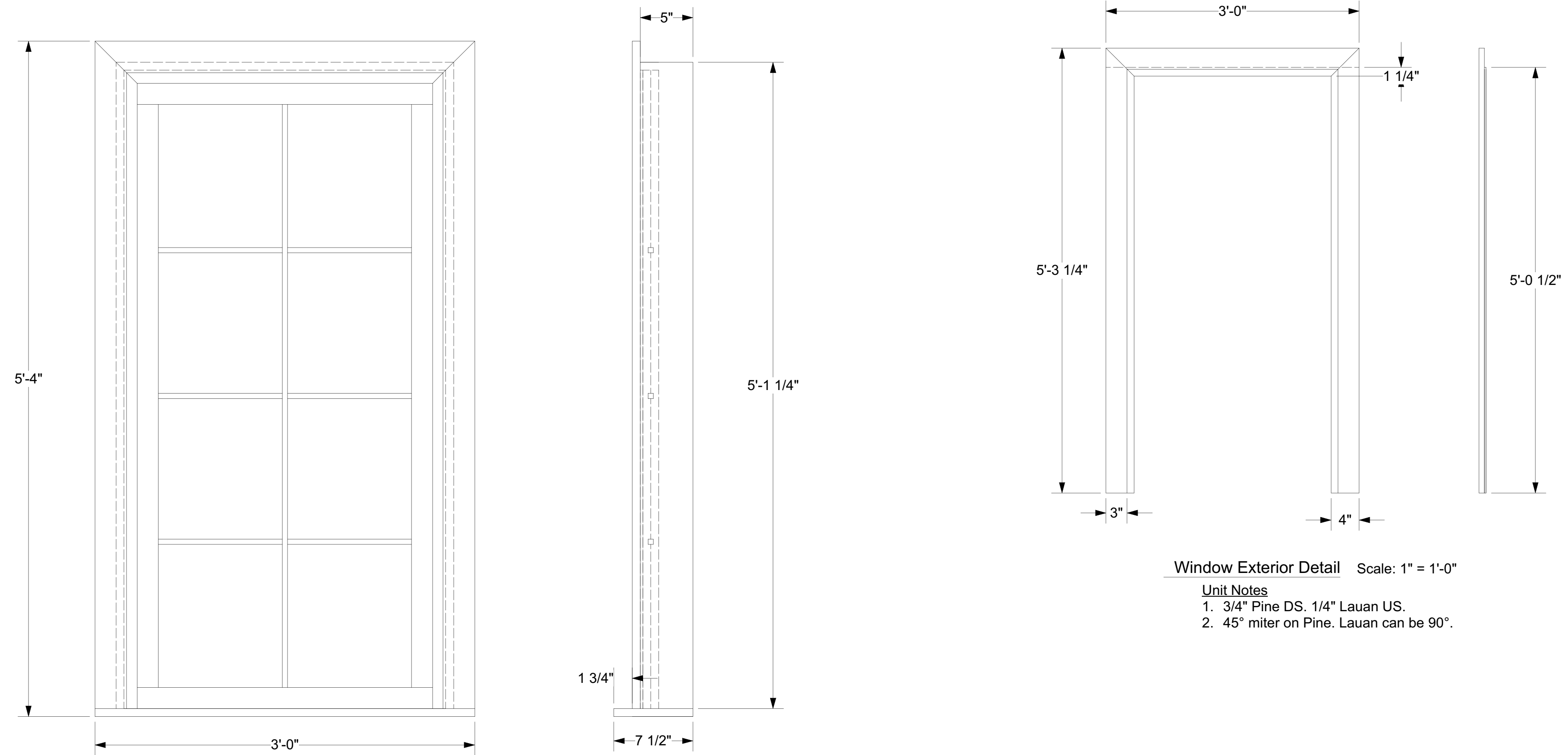
SE. J. Layout Scale: 3/4" = 1'-0"



SE. F. Detail Scale: 3/4" = 1'-0"

- Unit Notes**  
 1. Modify 2'x8' Platform.  
 2. New 2x4 in Green  
 3. Build 1

|                         |                          |
|-------------------------|--------------------------|
| <b>Summer and Smoke</b> |                          |
| Stage Extension         | Date : 8/25/2021         |
| Baker Theatre           | Scale : Per Unit         |
| Director : Sarah Yorke  | <b>Sht-3</b><br>OF<br>12 |
| Designer : Chris Rees   |                          |
| Revisions :             |                          |

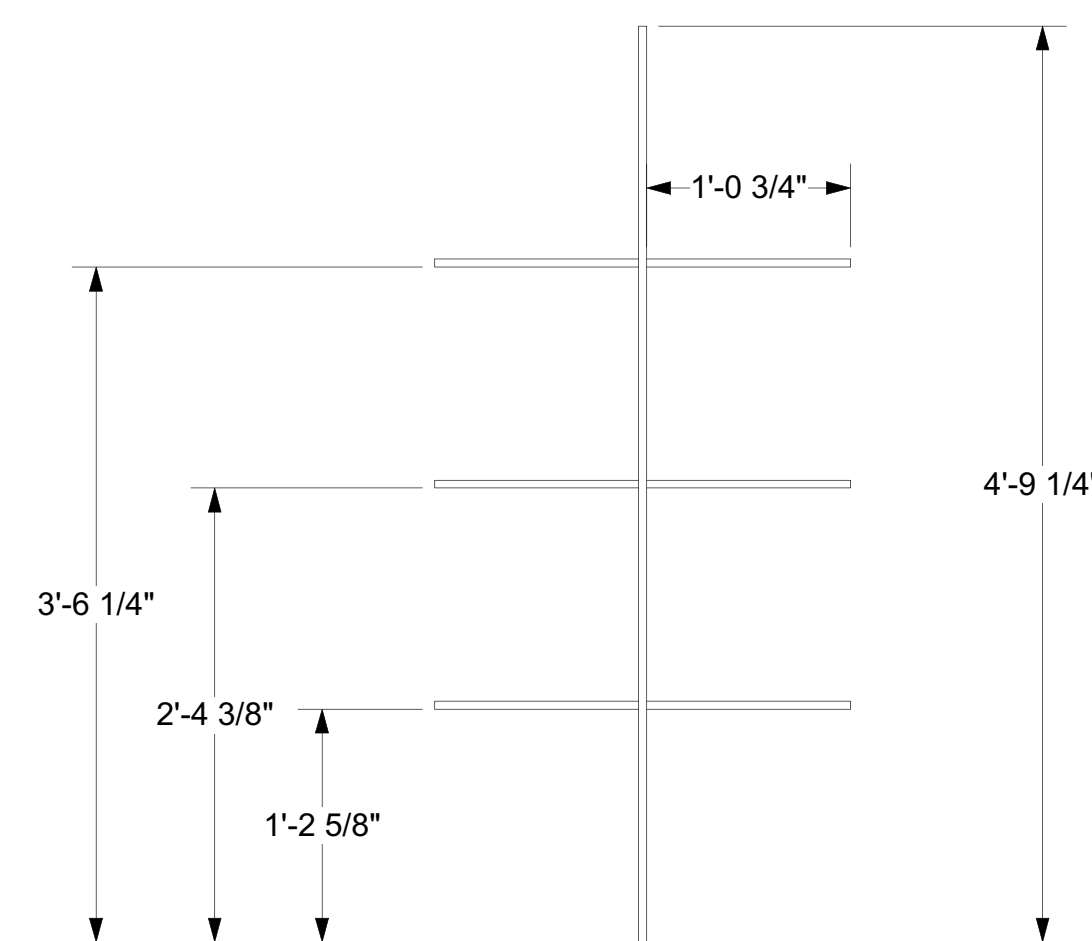


Window Exterior Detail Scale: 1" = 1'-0"

- Unit Notes
- 3/4" Pine DS, 1/4" Lauan US.
  - 45° miter on Pine. Lauan can be 90°.

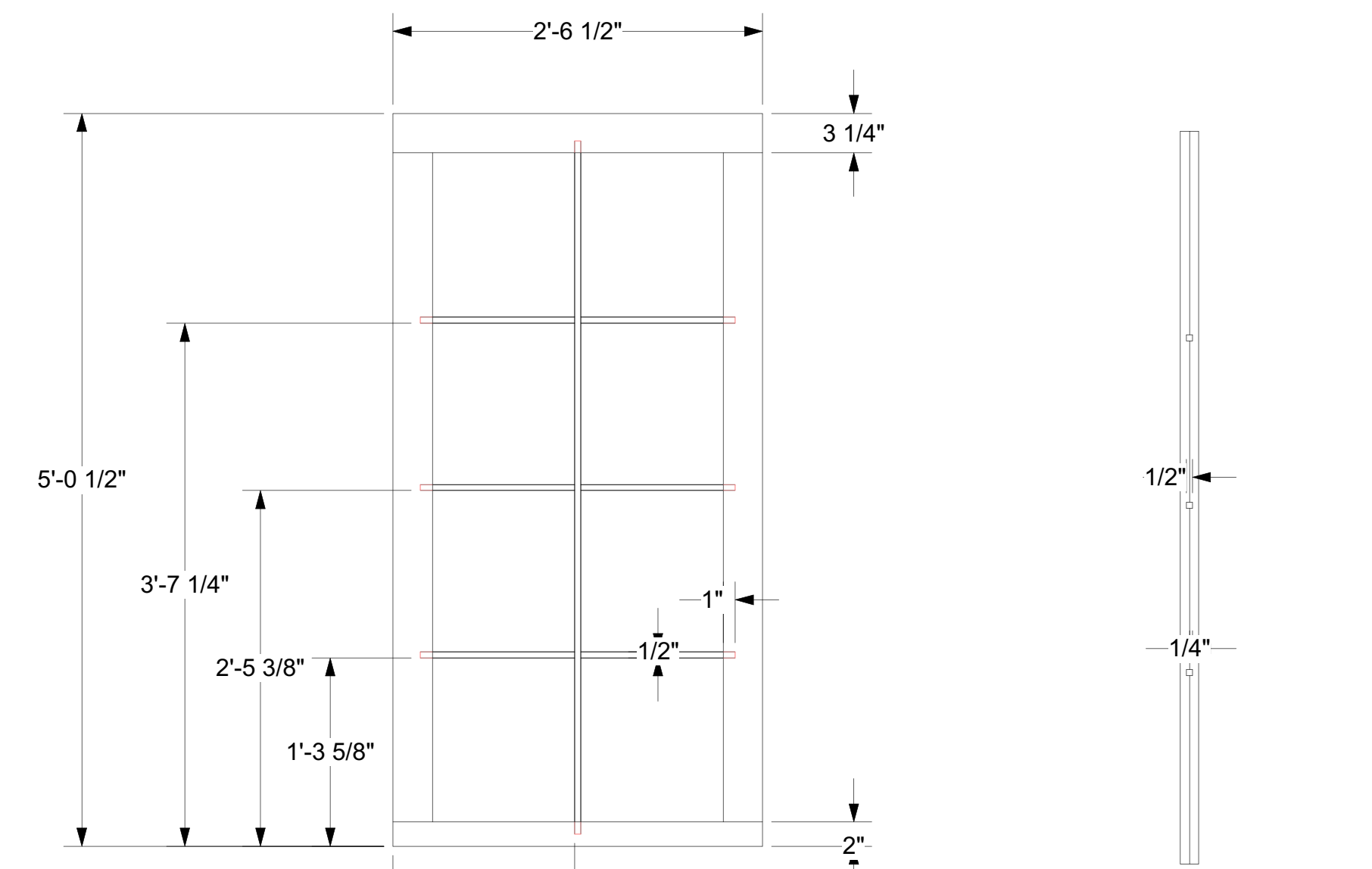
Completed Window Scale: 1 1/2" = 1'-0"

- Unit Notes
- Build 1
  - Fill all staple holes with joint compound.



Frame Window Metal Detail Scale: 1" = 1'-0"

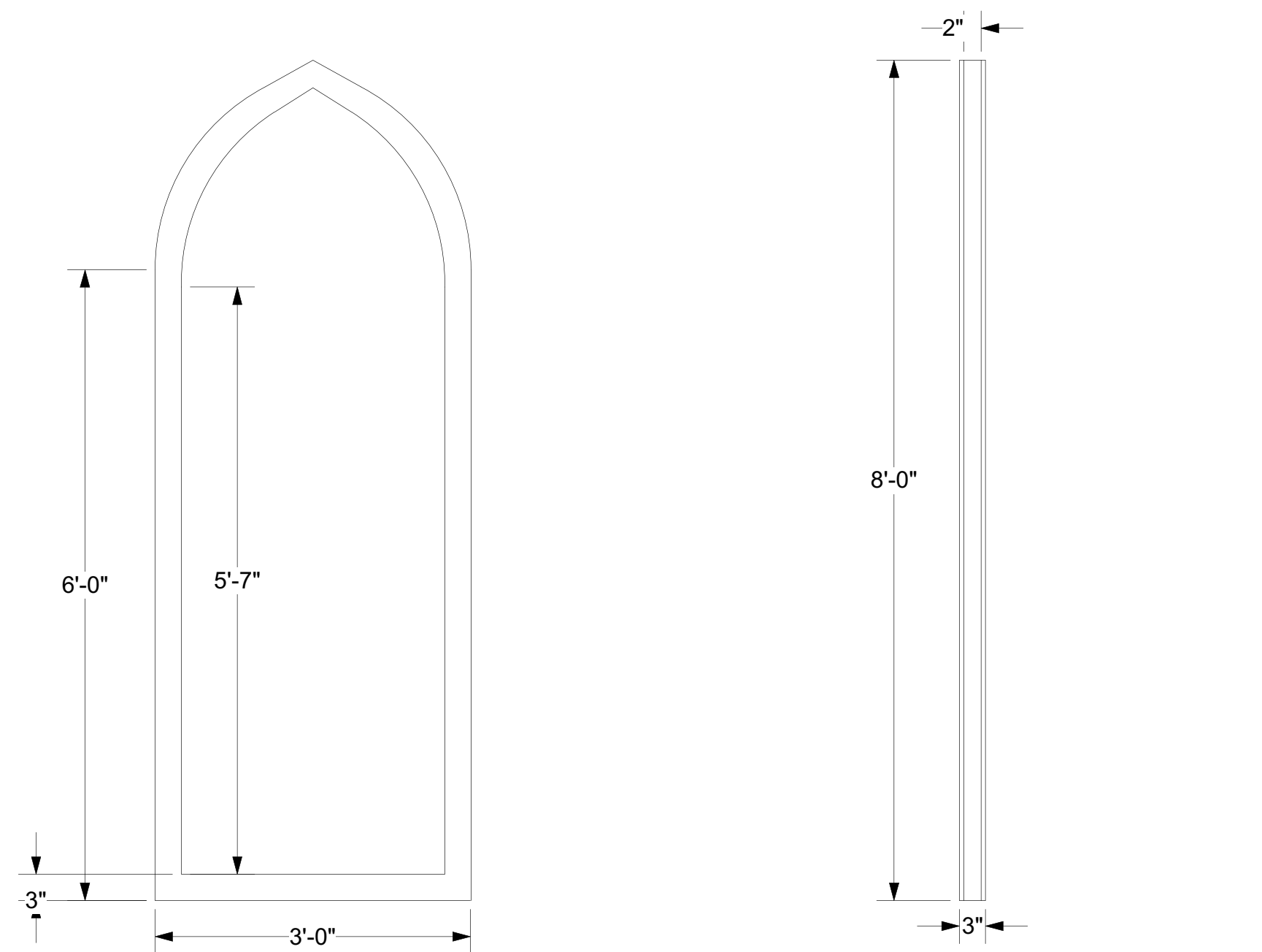
- Unit Notes
- Use 1/2" Steel Box Tube



Interior Frame Detail Scale: 1" = 1'-0"

- Unit Notes
- Sandwich steel between 3/4" Pine
  - Notch pine for metal nubbins in red.

Side View Scale: 1" = 1'-0"

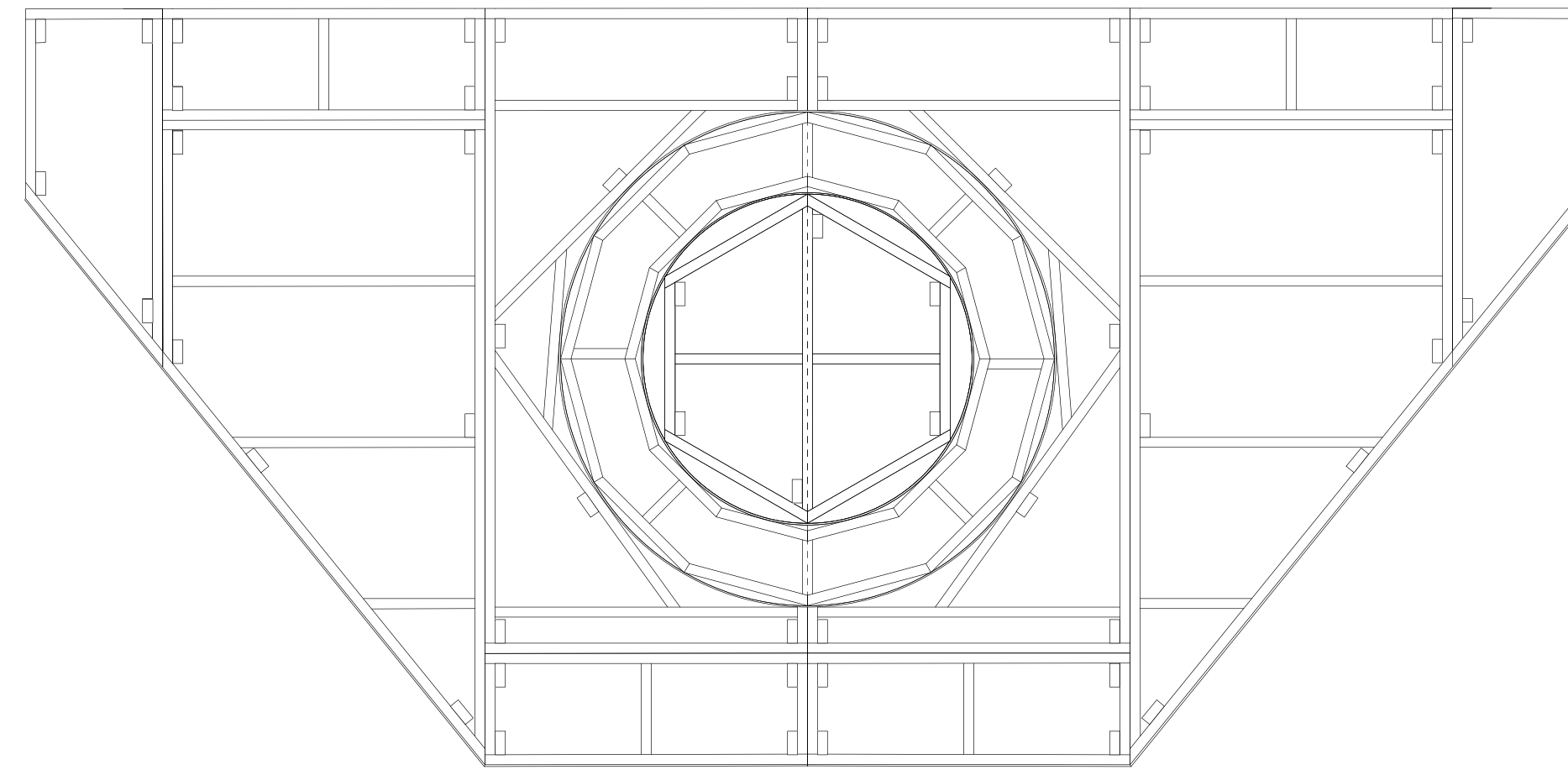


Gothic Window Front View Scale: 3/4" = 1'-0"

Gothic Window Side View Scale: 3/4" = 1'-0"

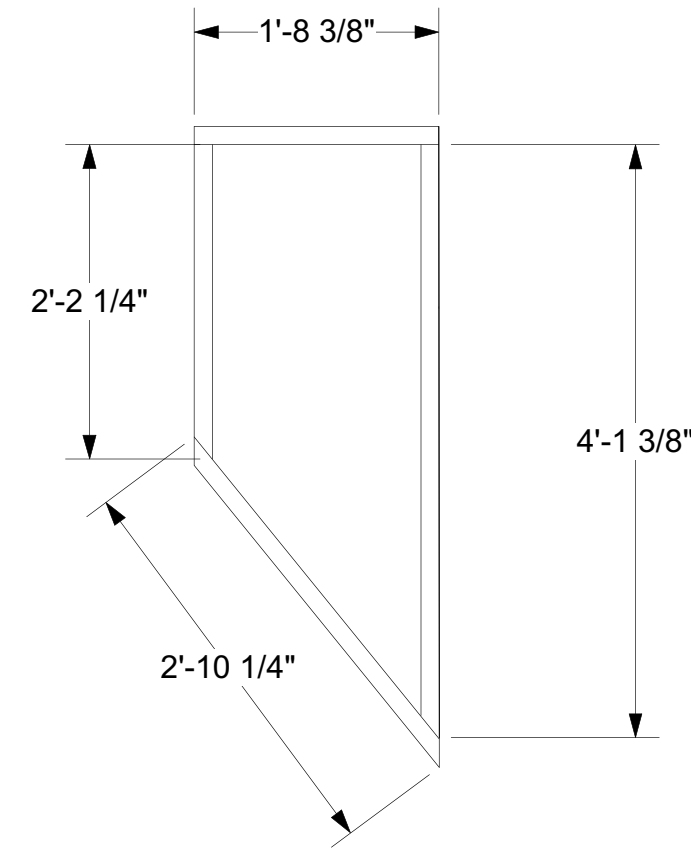
- Unit Notes
- Use 1/2" Poplar Plywood
  - Refer to full-size print out for top detail.
  - Build 2 cutouts, frame with 2" ply strips.

|                         |                                 |
|-------------------------|---------------------------------|
| <b>Summer and Smoke</b> |                                 |
| Windows                 | Date :                          |
| Baker Theatre           | Scale :                         |
| Director :              | <b>Sht-4</b><br>OF<br><b>12</b> |
| Designer :              |                                 |
| Revisions :             |                                 |
|                         |                                 |



Fountain Platform Top View Scale: 1/2" = 1'-0"

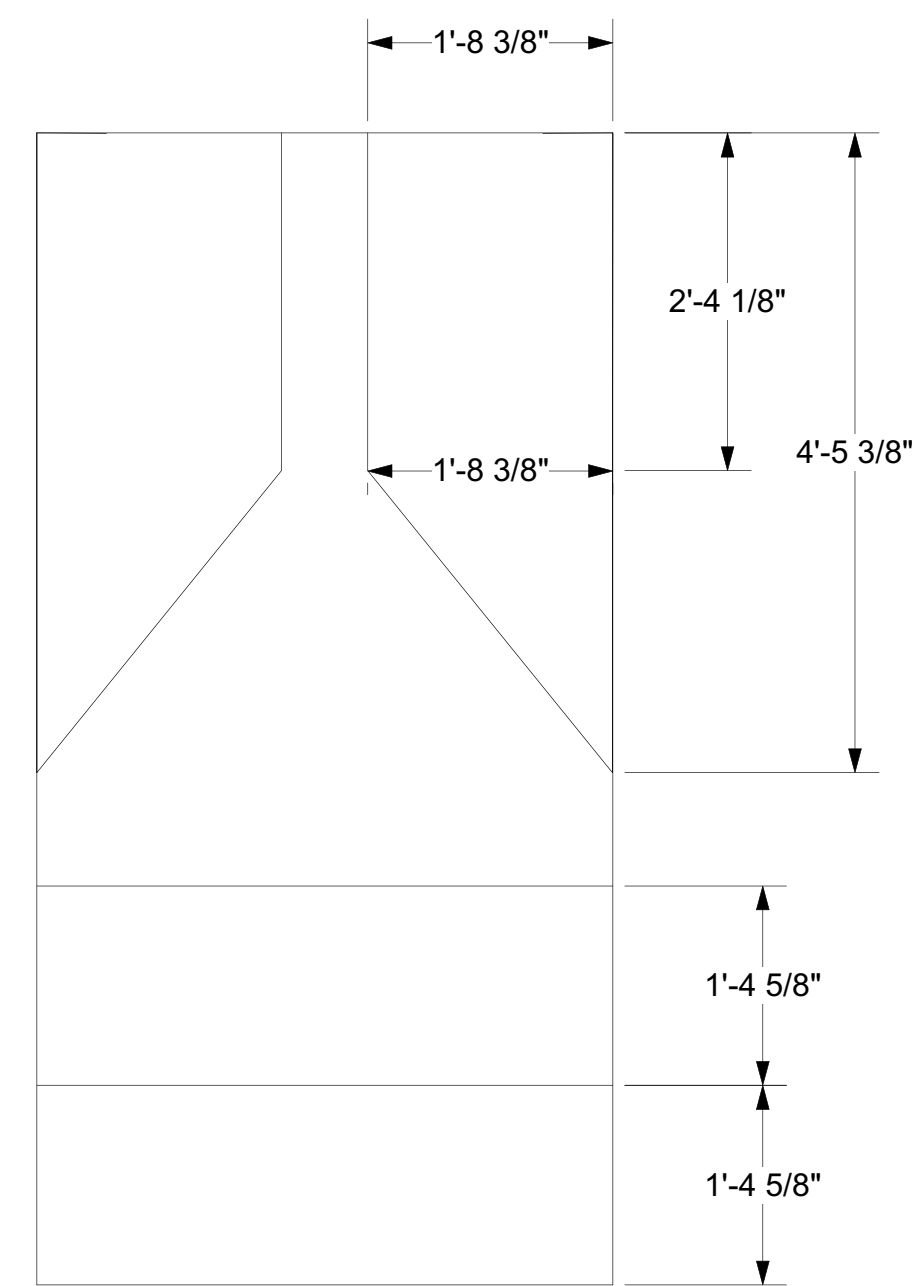
- General Notes**  
1. Cut all legs to 1' 11 1/4"



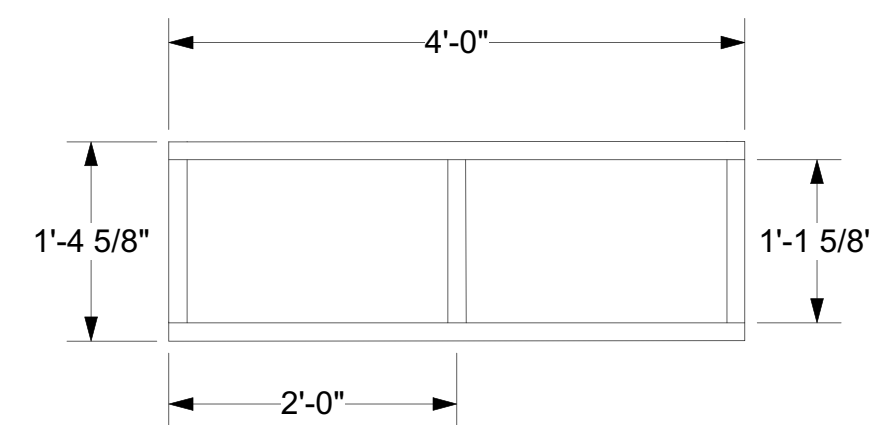
FP Offstage Platforms Scale: 3/4" = 1'-0"

**Unit Notes**

1. Build 2, Reverse and Repeat
2. See lid sheet good layout for conservation of materials
3. Cut lid first, frame 2x4 to lid



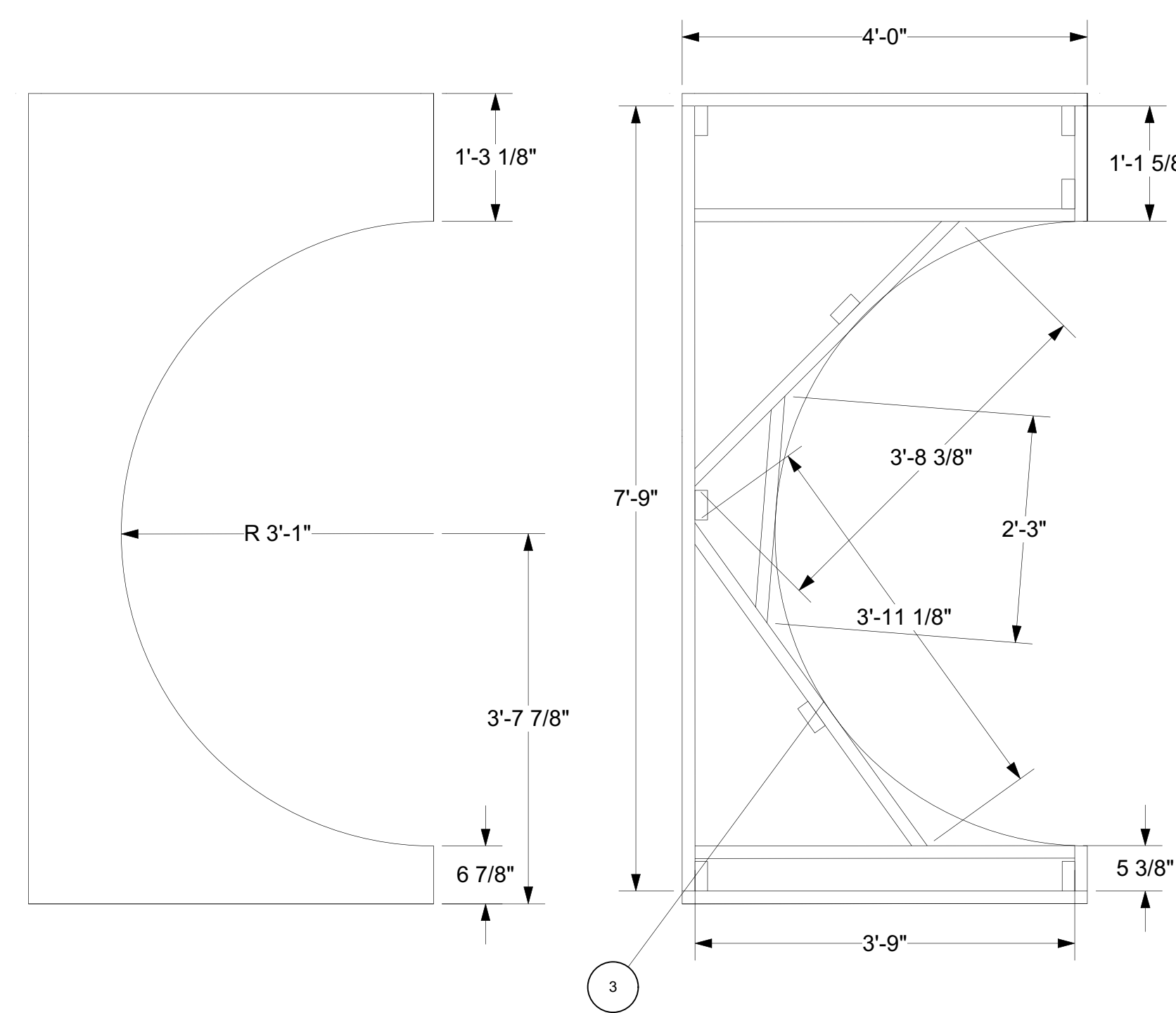
Offstage and US Sheet Good Layout Scale: 3/4" = 1'-0"



FP US/DS Platforms Scale: 3/4" = 1'-0"

**Unit Notes**

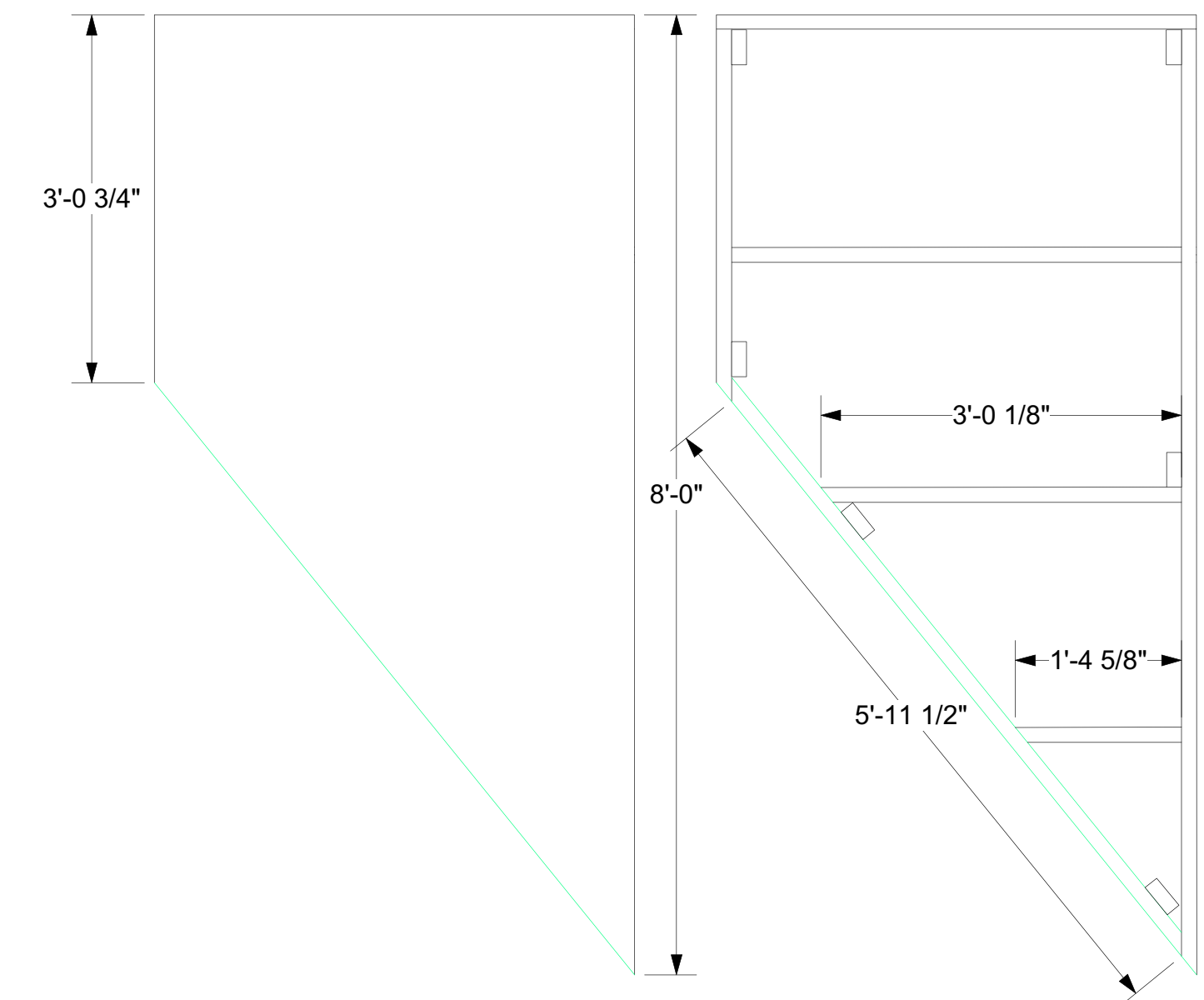
1. Build 4
2. See lid sheet good layout for conservation of materials
3. Use scrap sheet goods for other 2 lids.



FP Turntable Exterior Scale: 3/4" = 1'-0"

**Unit Notes**

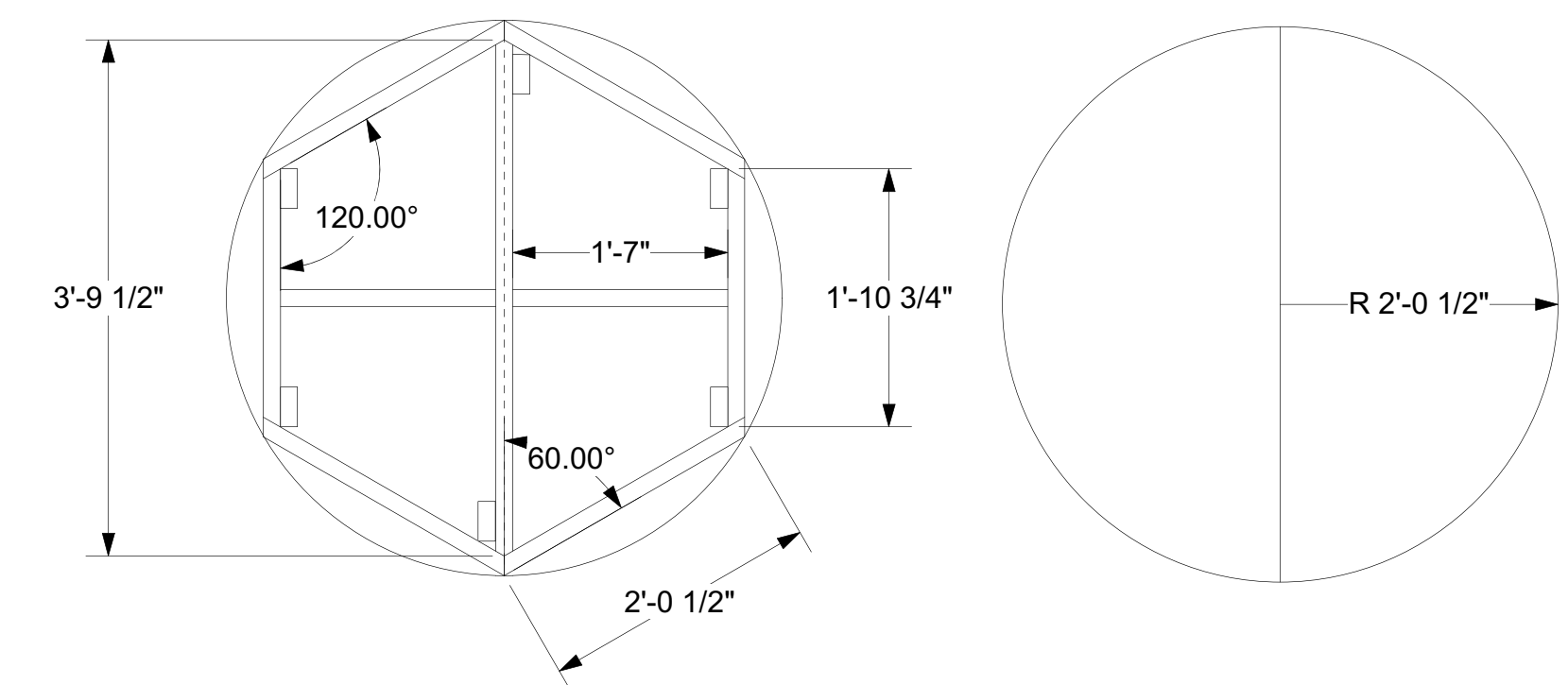
1. Build 2, Reverse and Repeat
2. SAVE interior circle sheet good scrap for other pieces.
3. It does not matter where on the platform these interior supports land - the important thing is that they get as close to the circle as possible without breaking past.



FP CS Platforms Scale: 3/4" = 1'-0"

**Unit Notes**

1. Build 2, Reverse and Repeat
2. Modify existing stock 4x8 platforms
3. Add new 2x4 frame in Green

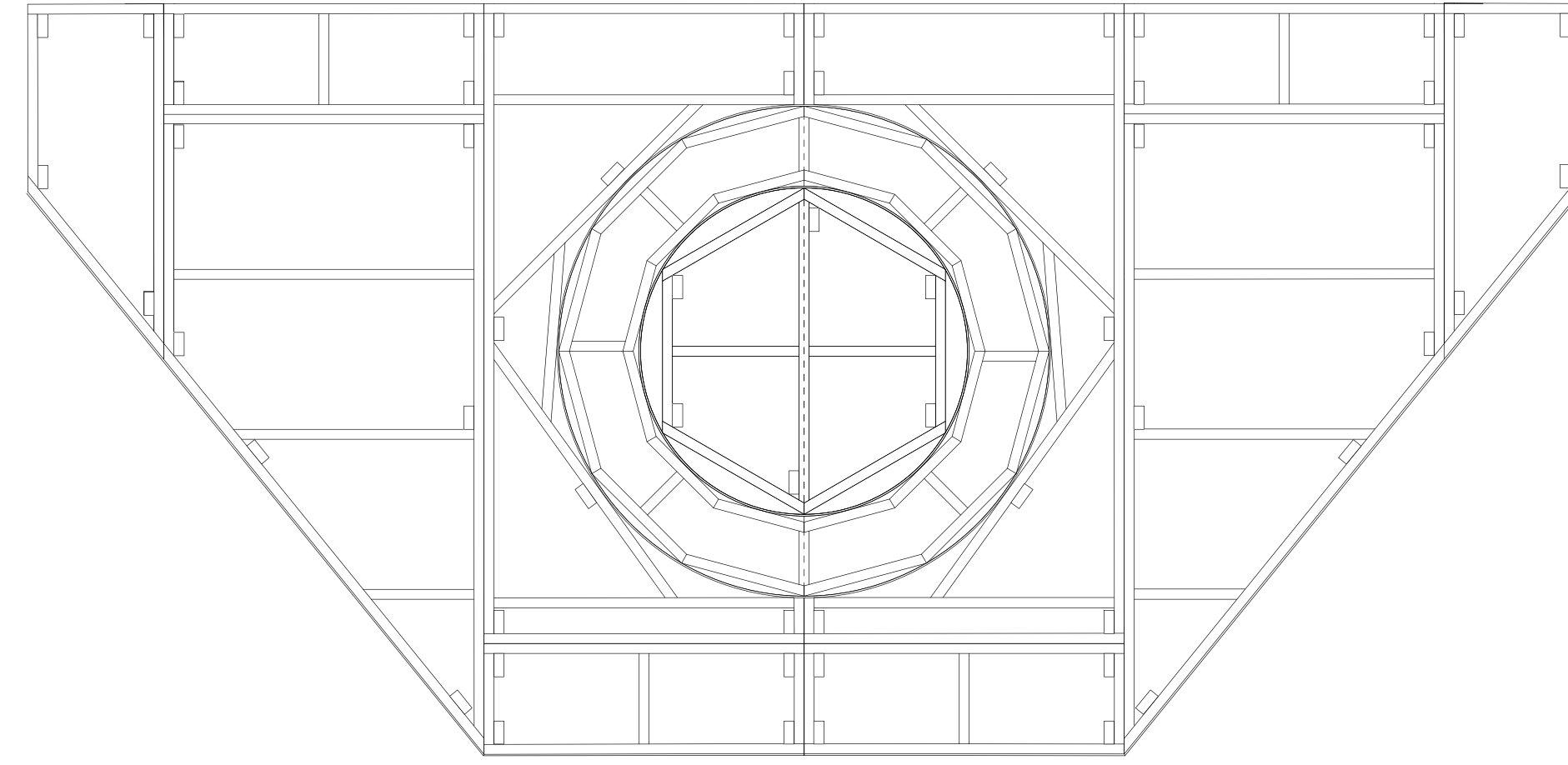


FP Turntable Interior Scale: 3/4" = 1'-0"

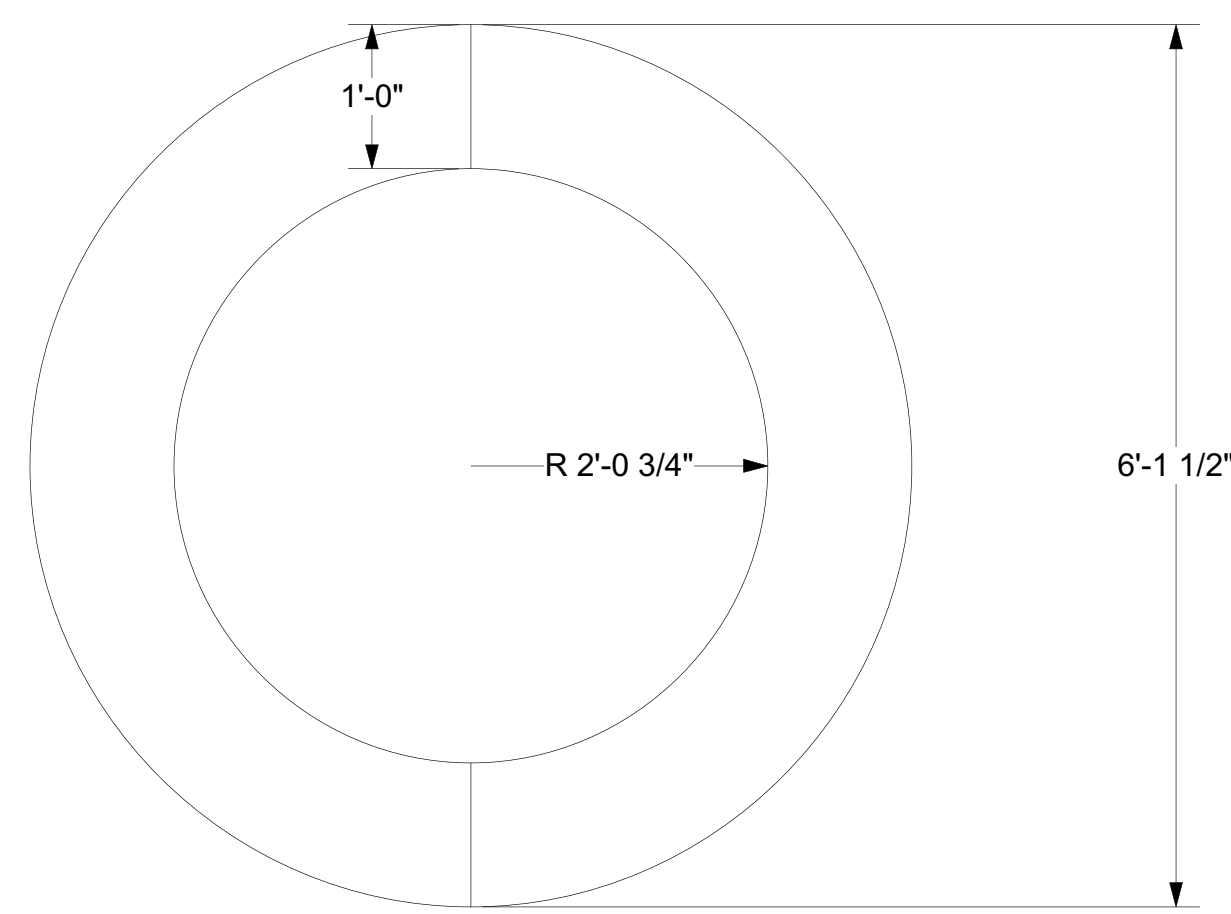
**Unit Notes**

1. Use circle sheet goods scrap from turntable project
2. Do not allow 2x4 to break past circle lid at any point

|                         |                          |
|-------------------------|--------------------------|
| <b>Summer and Smoke</b> |                          |
| Fountain Platform       | Date : 7/24/2021         |
| Baker Theatre           | Scale : Per Unit         |
| Director : Sarah Yorke  | <b>Sht-6</b><br>OF<br>12 |
| Designer : Chris Rees   |                          |
| Revisions :             |                          |
|                         |                          |



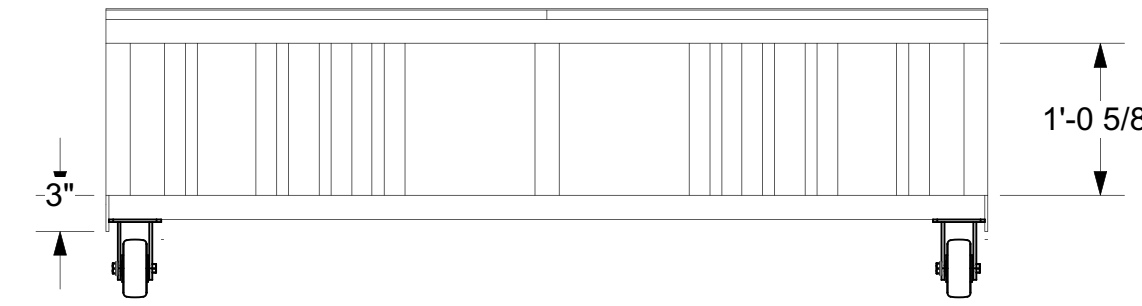
Turntable in Platform Scale: 1/2" = 1'-0"



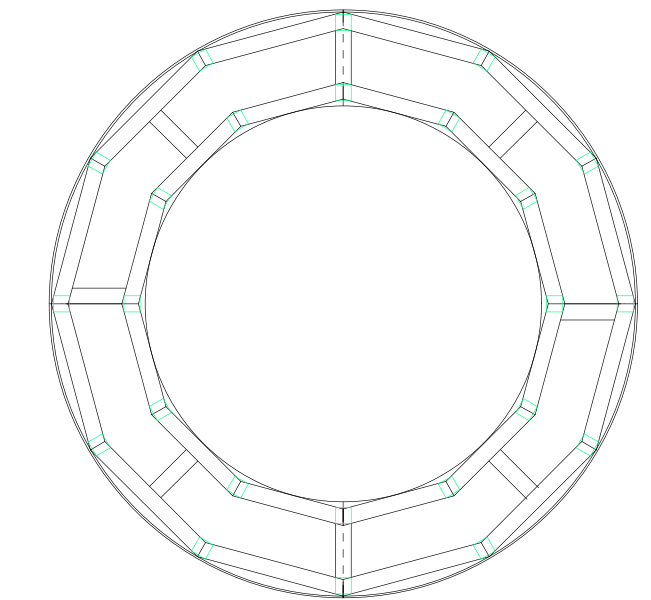
Turntable Sheet Layer Scale: 3/4" = 1'-0"

Unit Notes

1. Use circle scrap from Fountain Platform sheet good.
2. Save interior sheet good scrap for use in Interior Fountain Platform.



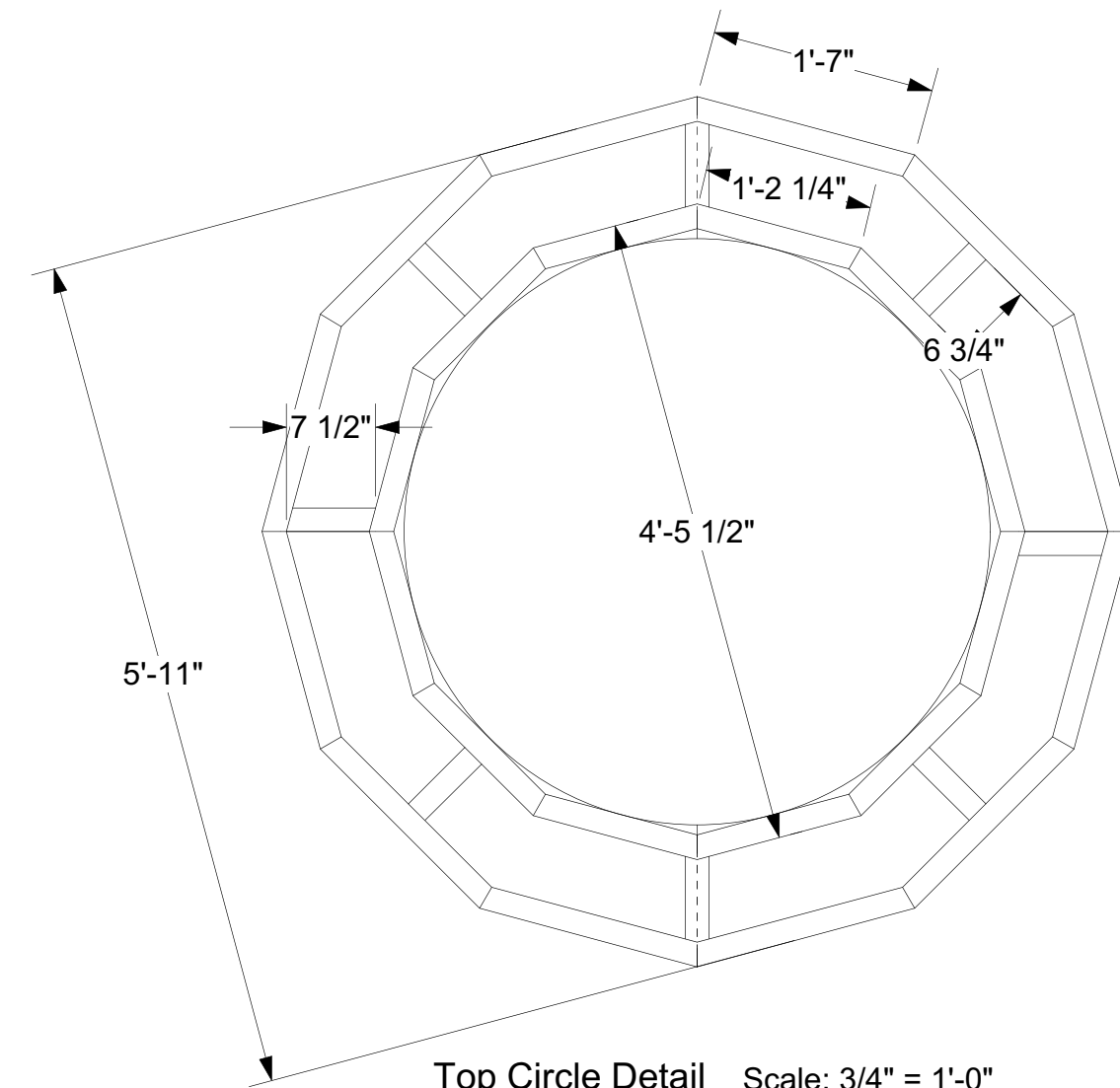
Front View Detail Scale: 3/4" = 1'-0"



Upright Placement Detail Scale: 1/2" = 1'-0"

Unit Notes

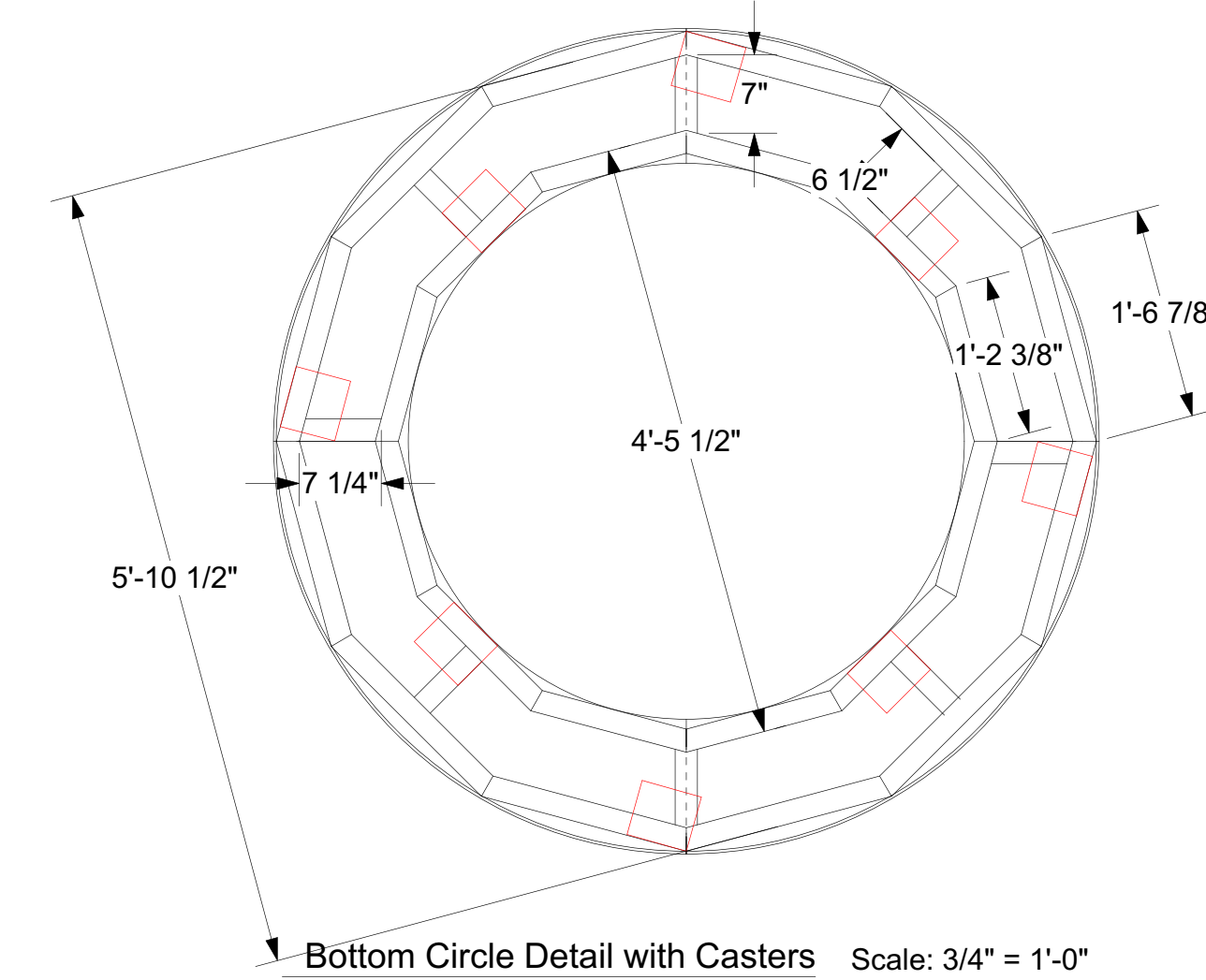
1. Green Squares indicate upright placement.



Top Circle Detail Scale: 3/4" = 1'-0"

Unit Notes

1. Only weld fillets.
2. Grind exterior welds smooth with flap wheel.

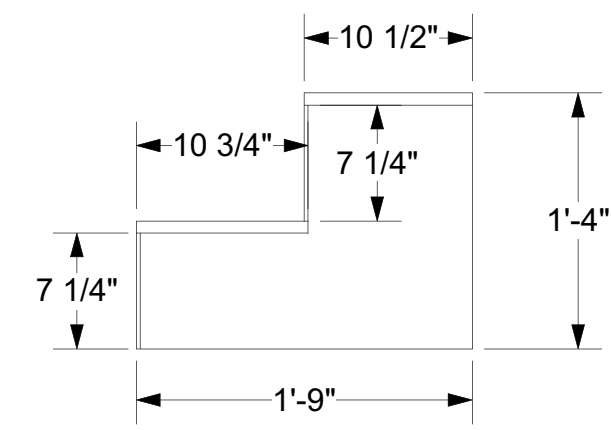


Bottom Circle Detail with Casters Scale: 3/4" = 1'-0"

Unit Notes

1. Only weld fillets.
2. Grind exterior welds smooth with flap wheel.
3. Bottom Unit wrapped in 3" x 3/16" Flat Bar.

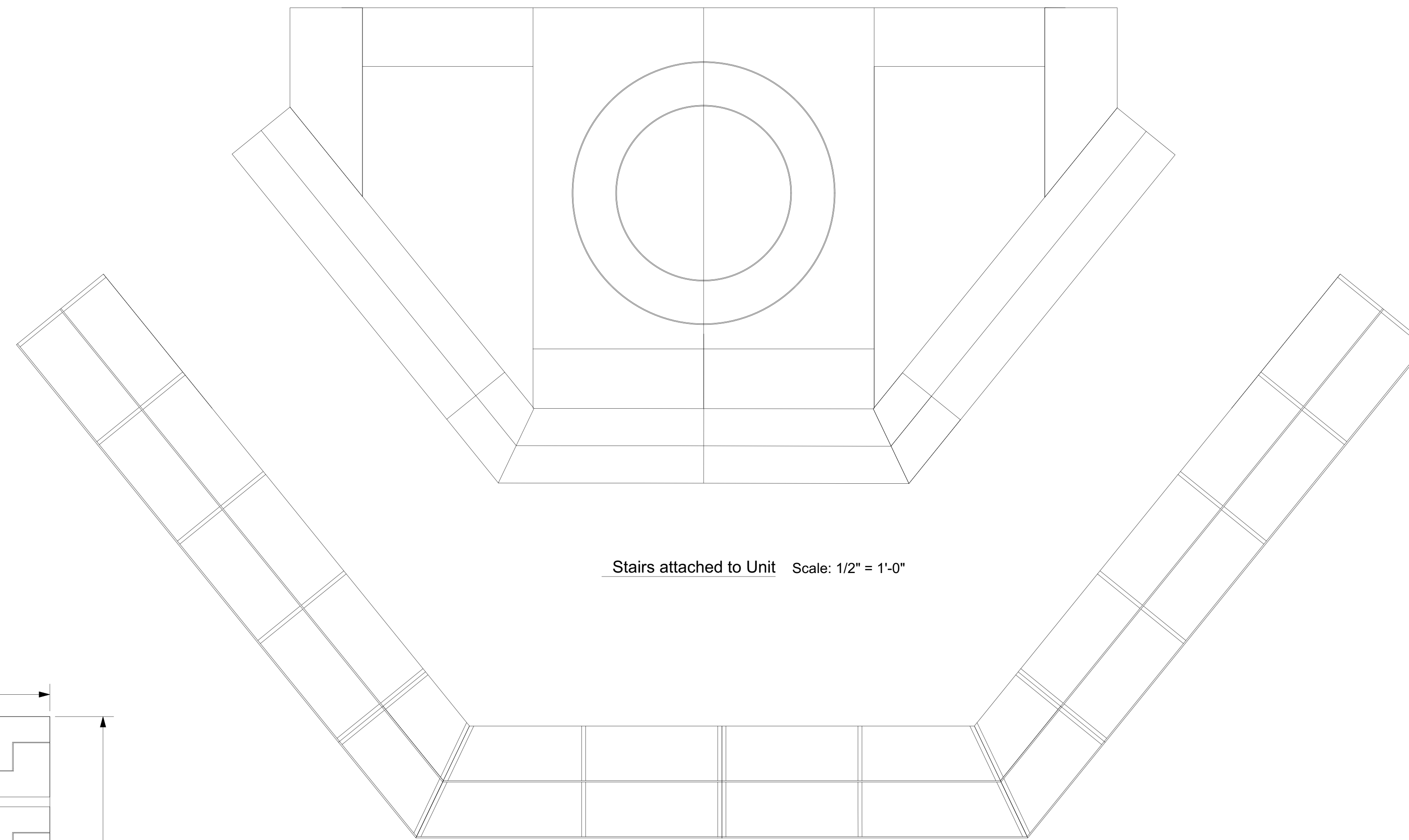
|                         |                          |
|-------------------------|--------------------------|
| <b>Summer and Smoke</b> |                          |
| Turntable Detail        | Date : 7/24/2021         |
| Baker Theatre           | Scale : Per Unit         |
| Director : Sarah Yorke  | <b>Sht-7</b><br>OF<br>12 |
| Designer : Chris Rees   |                          |
| Revisions :             |                          |



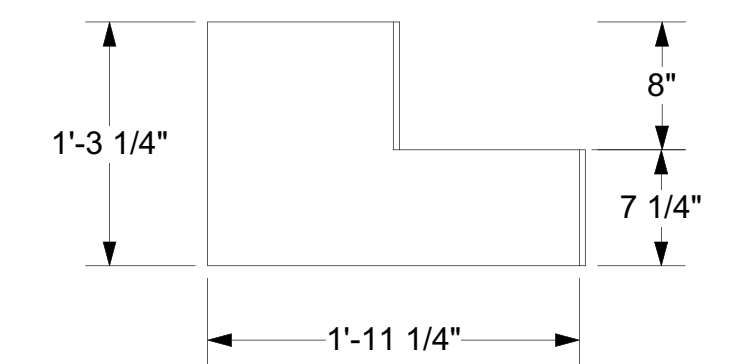
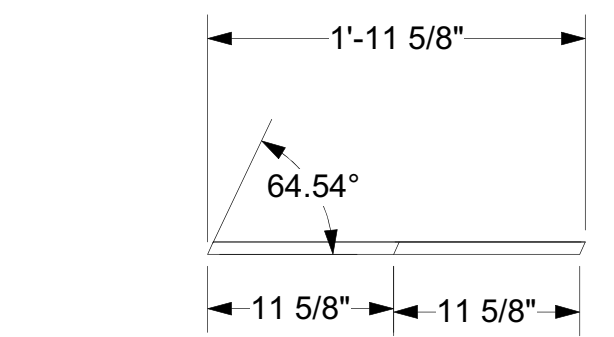
Stairs Sideview Scale: 1" = 1'-0"

General Notes

1. Stringers and Lids made of 3/4" OSB
2. Stair Masking made of 1/4" Lauan



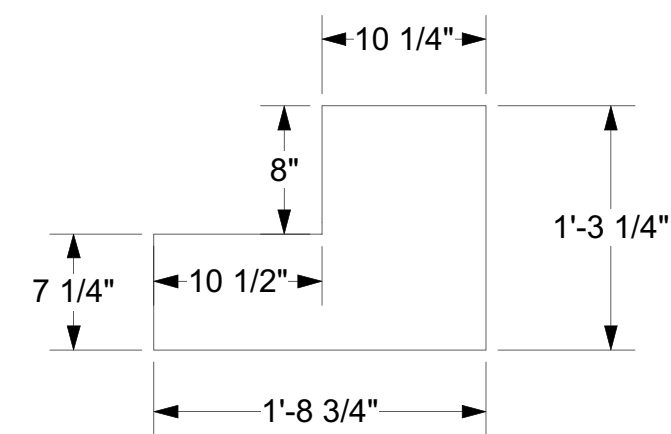
Stairs attached to Unit Scale: 1/2" = 1'-0"



Angled Stringer Scale: 1" = 1'-0"

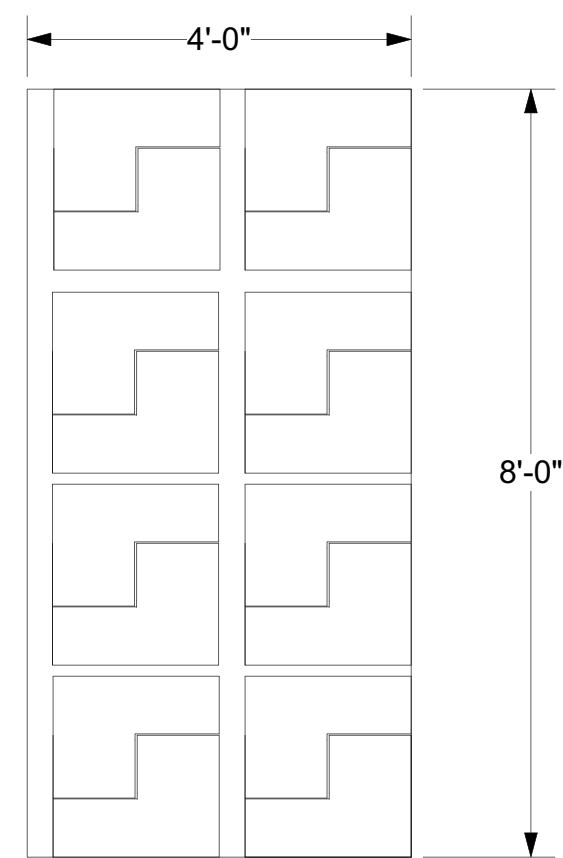
General Notes

1. Build 4, Reverse and Repeat 2



Square Stringer Sideview Scale: 1" = 1'-0"

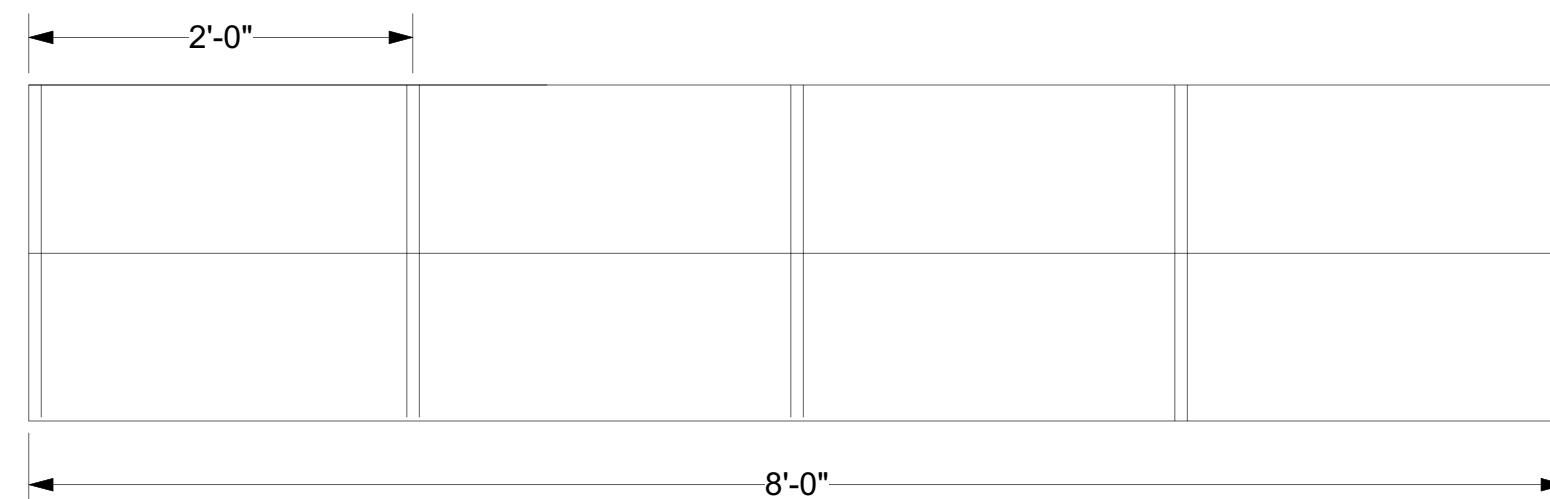
- Unit Notes
1. Build 16



Square Stringer Sheet Scale: 1/2" = 1'-0"

General Notes

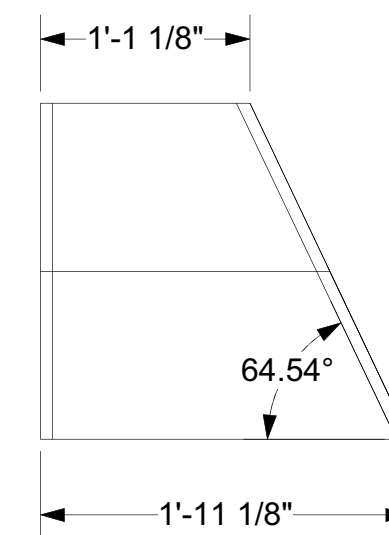
1. The goal is to get 16 square stringers out of a single sheet of OSB.



OffStage Stairs Scale: 1" = 1'-0"

Unit Notes

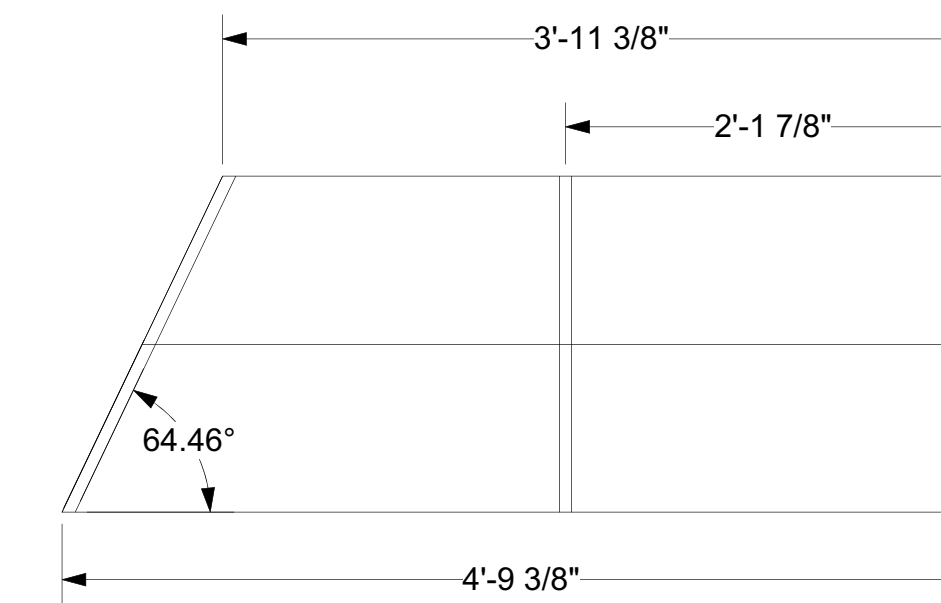
1. Build 2
2. Interior stringers on 2'0" centers typical.



OnStage Stairs Scale: 1" = 1'-0"

Unit Notes

1. Build 2, Reverse and Repeat



Downstage Stairs Scale: 1" = 1'-0"

Unit Notes

1. Build 2, Reverse and Repeat

Summer and Smoke

Fountain Platform Stairs Date : 7/24/2021

Baker Theatre Scale : Per Unit

Director : Sarah Yorke

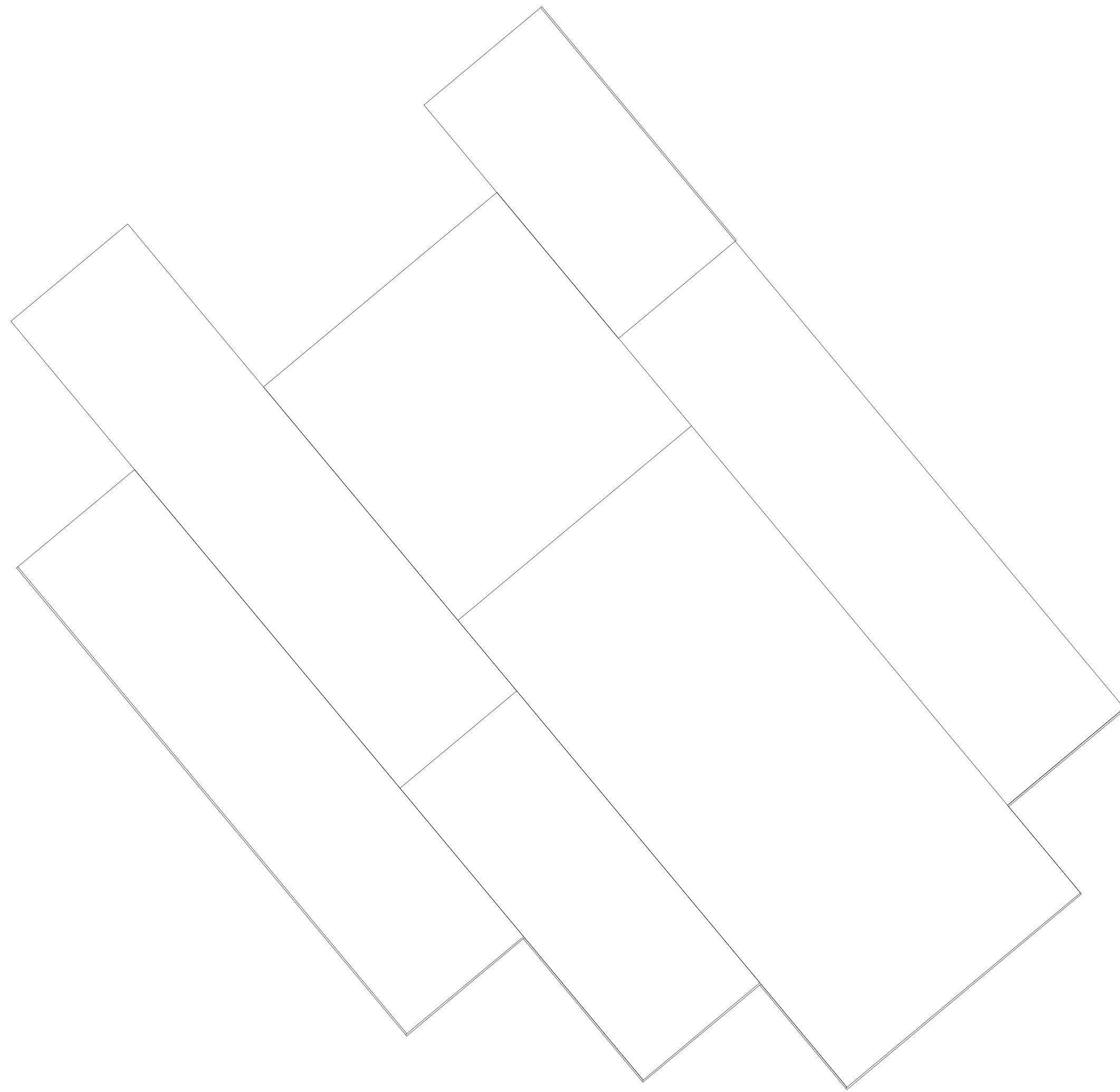
Designer : Chris Rees

Revisions :

Sht-8

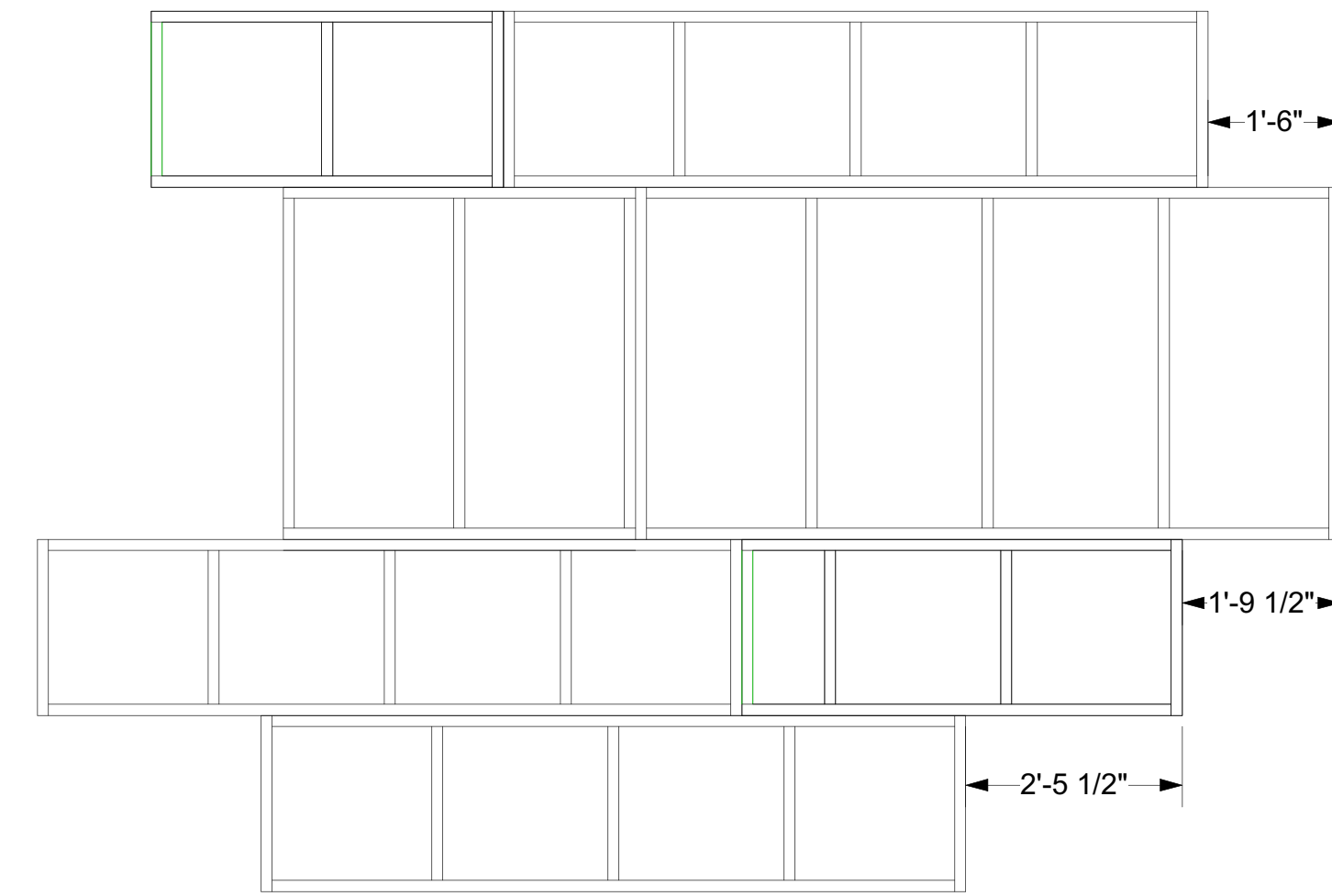
OF

12



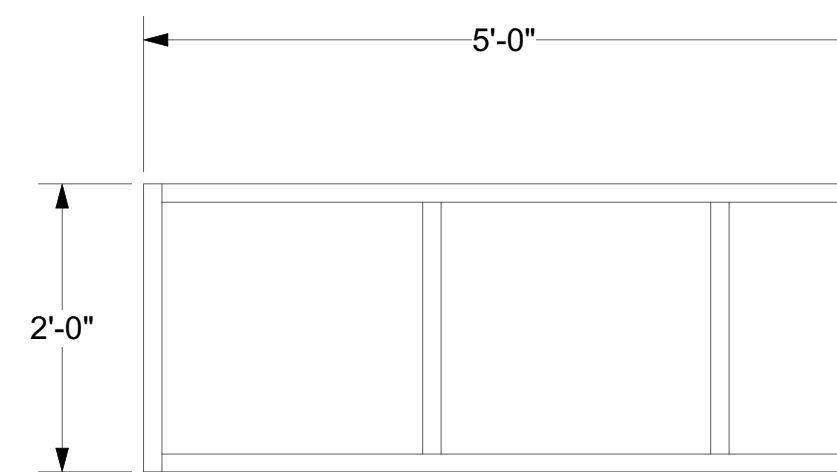
SR Wagon Detail with Masking Scale: 3/4" = 1'-0"

- Unit Notes
1. Rip lauan facing to 7" strips.
  2. Apply facing to designated faces.
  3. Skin lids with 1/8" masonite, route flush.



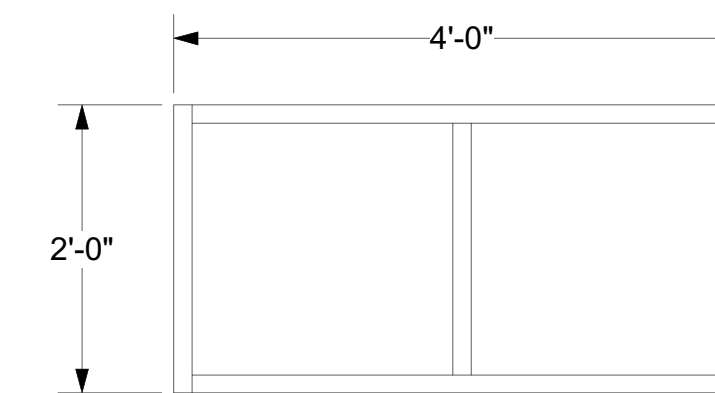
Wagon Framing Scale: 1/2" = 1'-0"

- Unit Notes
1. Bolt together with 3/8" Bolts



Wagon Modification Scale: 3/4" = 1'-0"

- Unit Notes
1. Modify 1 @ 2'-0" x 8'-0"
  2. Add new 2x4 in green.

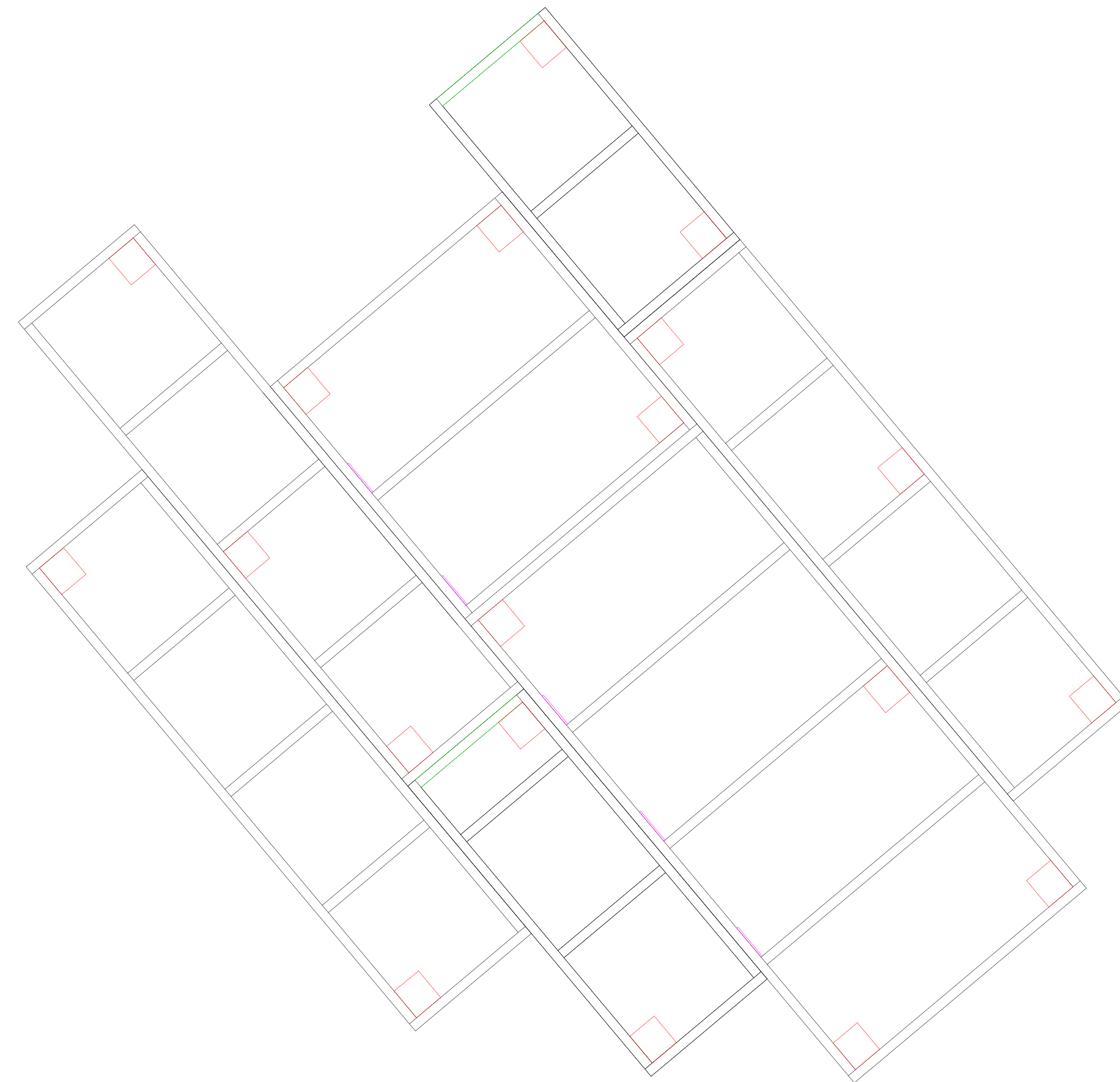


Wagon Modification Scale: 3/4" = 1'-0"

- Unit Notes
1. Modify 1 @ 2'-0" x 8'-0"
  2. Add new 2x4 in green.

|                         |                                 |
|-------------------------|---------------------------------|
| <b>Summer and Smoke</b> |                                 |
| SR Wagon                | Date :                          |
| Baker Theatre           | Scale :                         |
| Director :              | <b>Sht-9</b><br>OF<br><b>12</b> |
| Designer :              |                                 |
| Revisions :             |                                 |
|                         |                                 |

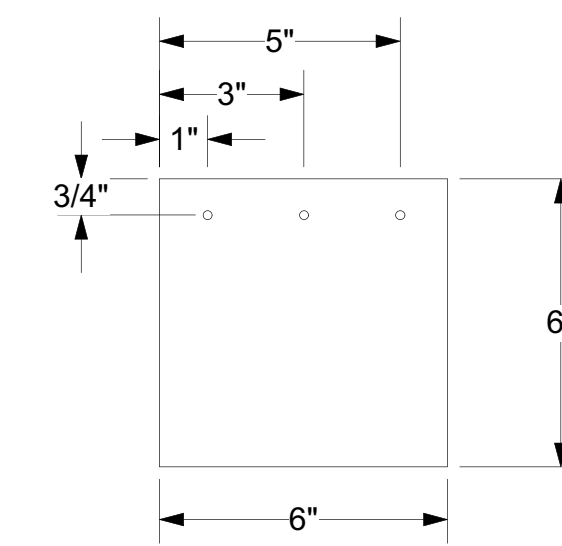




SR Wagon UHMW Detail Scale: 3/4" = 1'-0"

**General Notes**

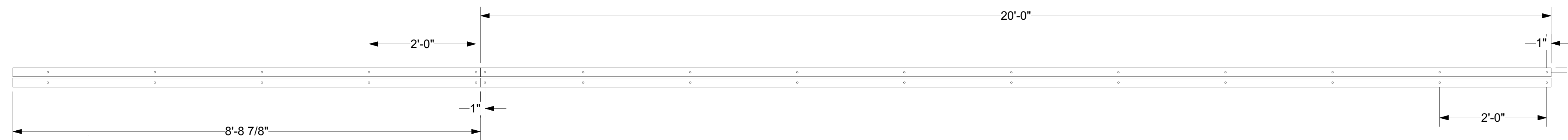
1. Attach UHMW squares in purple to side of wagon.
2. IMPORTANT: Casters in red must all be on same angle, parallel with each other.



UHMW Detail Scale: 3" = 1'-0"

**Unit Notes**

1. Build 10
2. Drill holes with 3/16" drill bit.
3. Countersink drilled holes.
4. Gently sand DS vertical edge into wedge shape - ask for specifics.



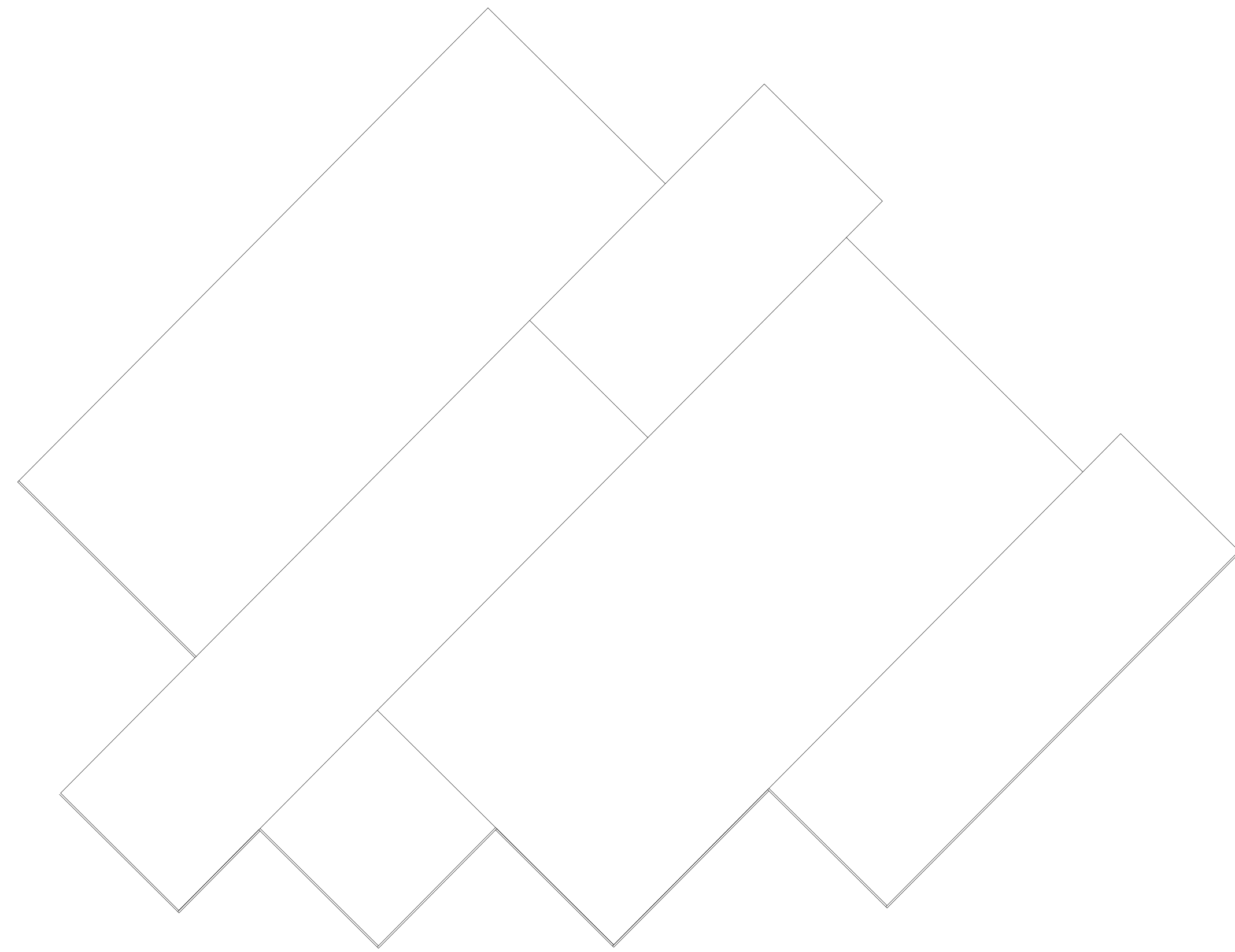
SR Wagon Track Scale: 3/4" = 1'-0"

**Unit Notes**

1. Track made from 2" x 2" x 1/8" Angle Iron
2. Hole are on 2'-0" centers typical.
3. Drill Holes using 25/64" Drill Bit
4. Grind smooth using Flapwheel
5. Maintain 5/16" spacing between pieces during Load-In

TYP

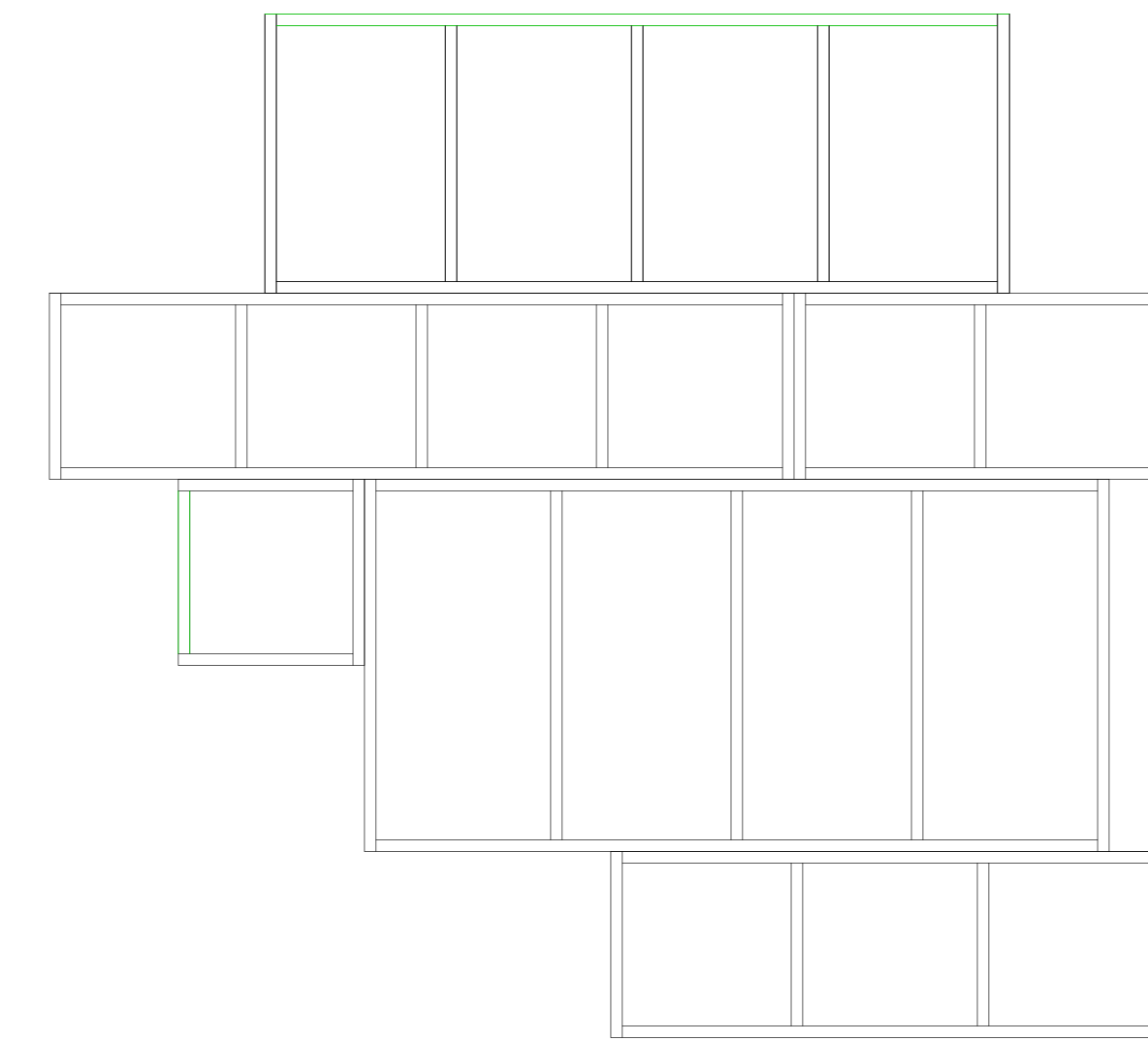
|                         |                                  |
|-------------------------|----------------------------------|
| <b>Summer and Smoke</b> |                                  |
| SR Wagon Page 2         | Date : 7/24/2021                 |
| Baker Theatre           | Scale : Per Unit                 |
| Director : Sarah Yorke  | <b>Sht-10</b><br>OF<br><b>12</b> |
| Designer : Chris Rees   |                                  |
| Revisions :             |                                  |
|                         |                                  |



SL Wagon with Facing Scale: 3/4" = 1'-0"

Unit Notes

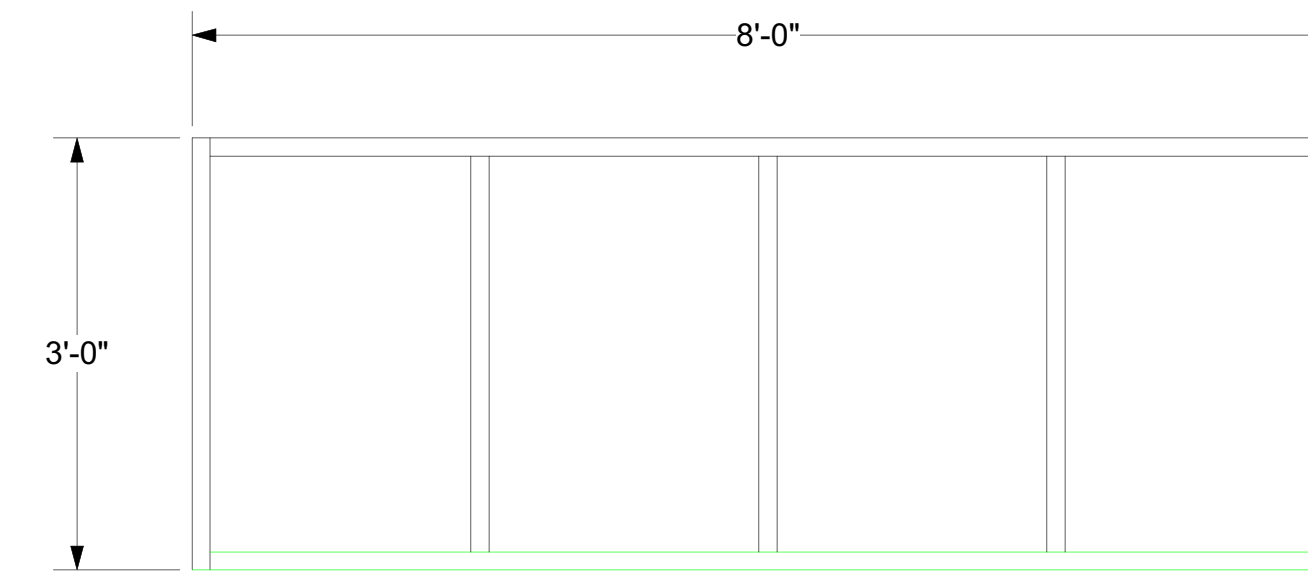
1. Rip lauan facing to 7" strips.
2. Apply facing to designated faces.
3. Skin lids with 1/8" masonite, route flush.



SL Wagon Framing Scale: 1/2" = 1'-0"

Unit Notes

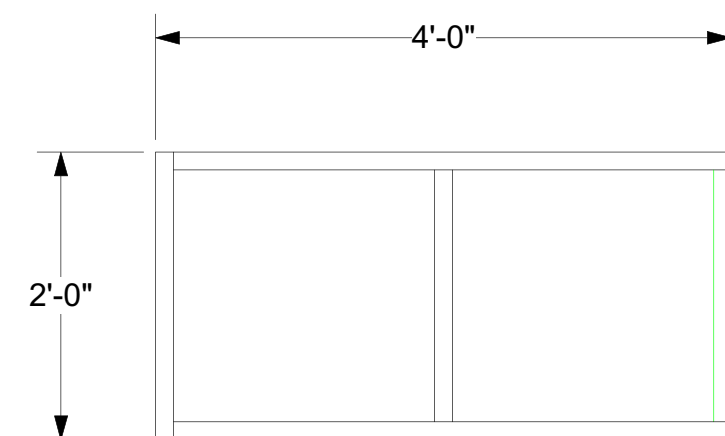
1. Bolt together with 3/8" Bolts



Wagon Modification Scale: 3/4" = 1'-0"

Unit Notes

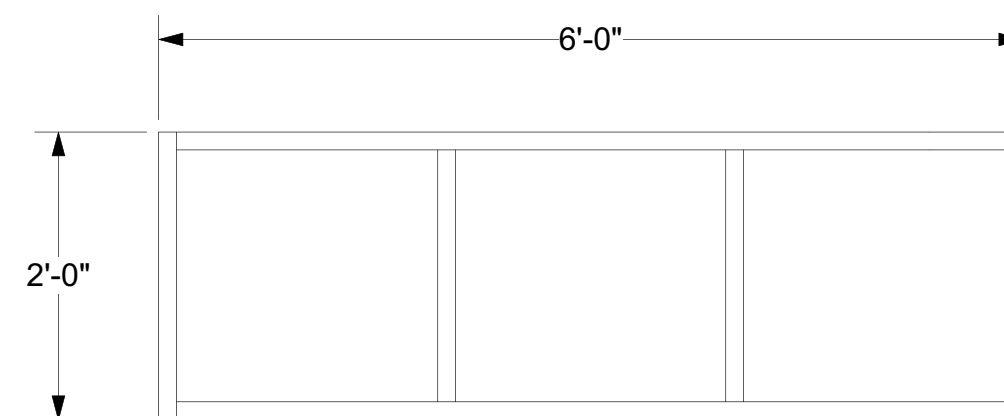
1. Modify 1 @ 4'-0" x 8'-0"
2. Add new 2x4 in green.



Wagon Modification Scale: 3/4" = 1'-0"

Unit Notes

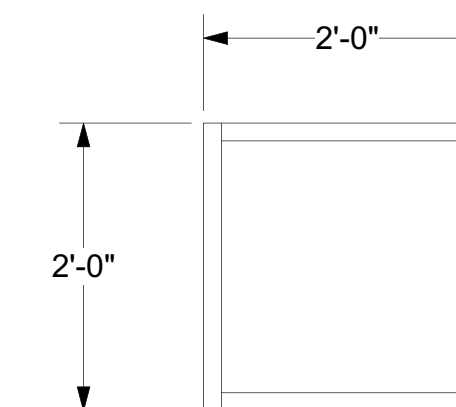
1. Modify 1 @ 2'-0" x 8'-0"
2. Add new 2x4 in green.



Wagon Modification Scale: 3/4" = 1'-0"

Unit Notes

1. Modify 1 @ 2'-0" x 8'-0"
2. Add new 2x4 in green.

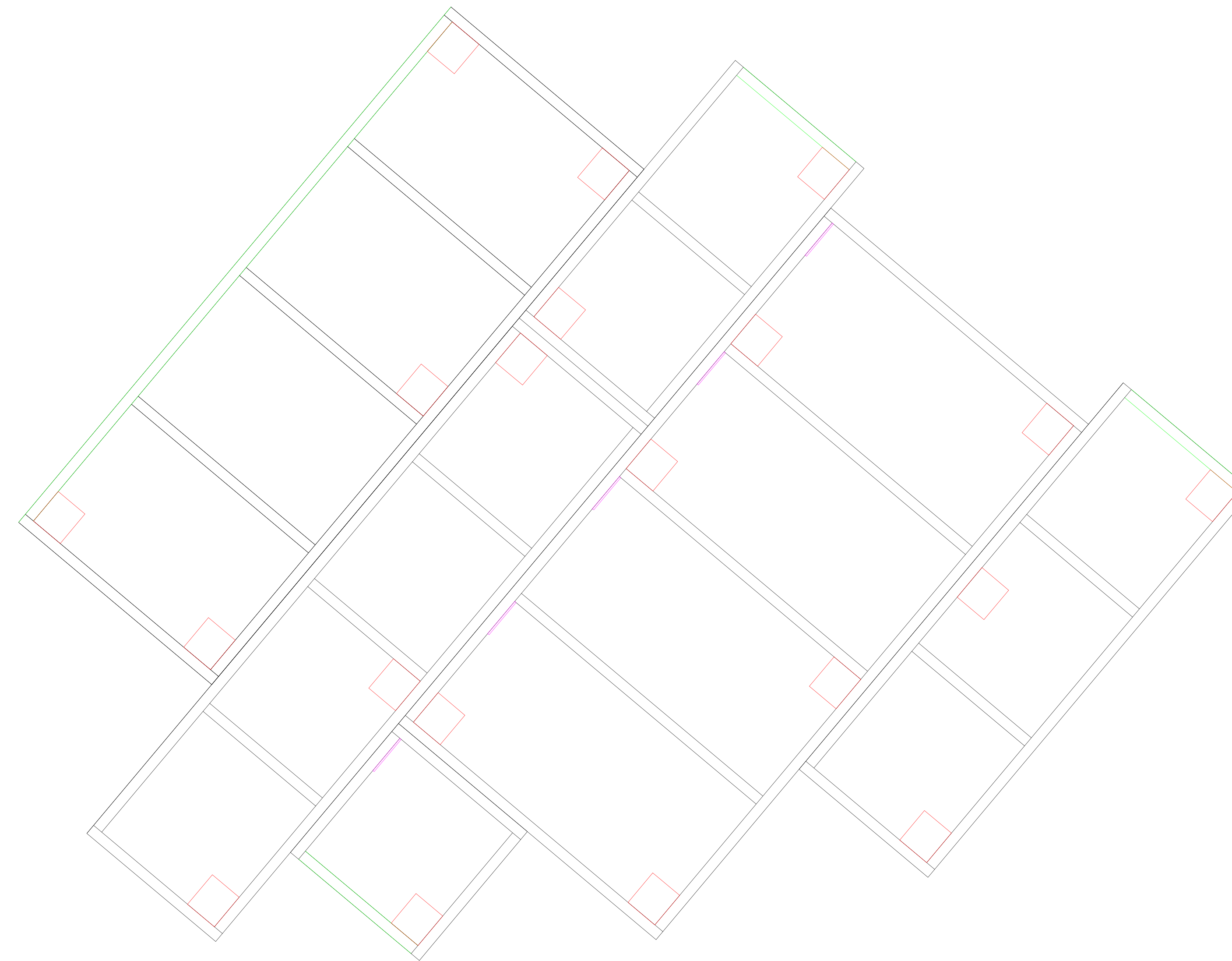


Wagon Modification Scale: 3/4" = 1'-0"

Unit Notes

1. Use off-cut from one of the other modifications.
2. Add new 2x4 in green.

|                         |                           |
|-------------------------|---------------------------|
| <b>Summer and Smoke</b> |                           |
| SL Wagon                | Date :                    |
| Baker Theatre           | Scale :                   |
| Director :              | <b>Sht-11</b><br>OF<br>12 |
| Designer :              |                           |
| Revisions :             |                           |



SL Wagon Detail Scale: 1" = 1'-0"

**General Notes**

1. Attach UHMW squares in purple to side of wagon.
2. IMPORTANT: Casters in red must all be on same angle, parallel with each other.

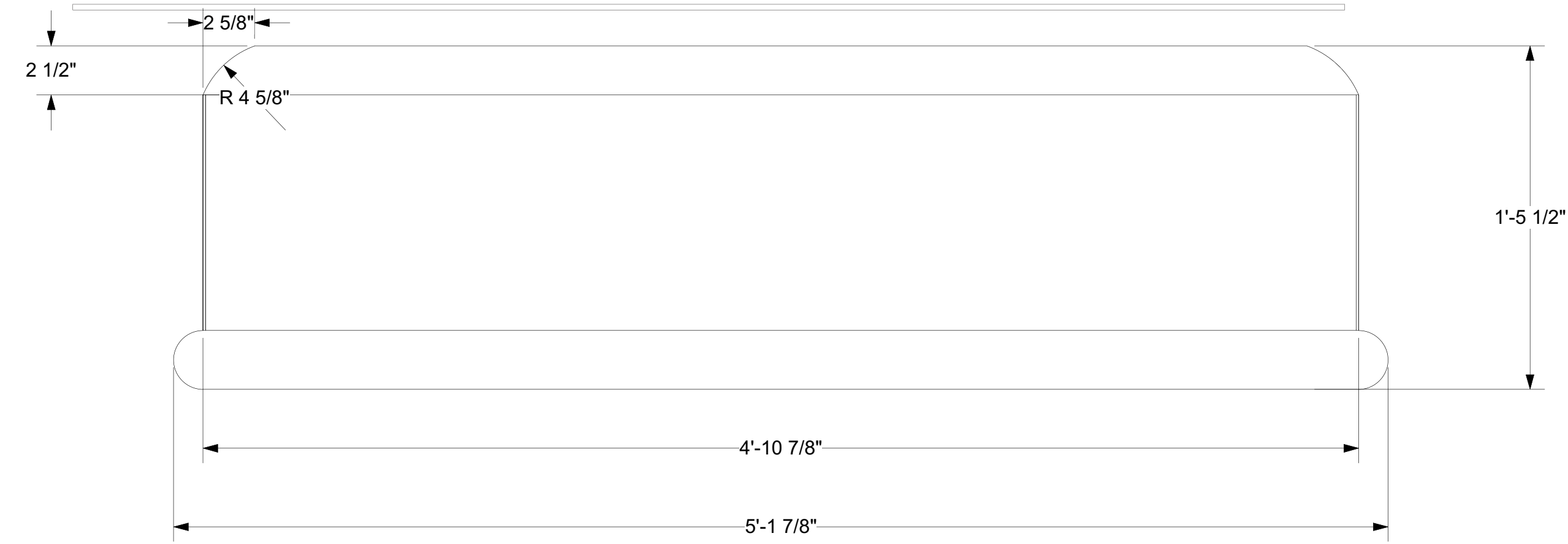


SL Wagon Track Scale: 3/4" = 1'-0"

**Unit Notes**

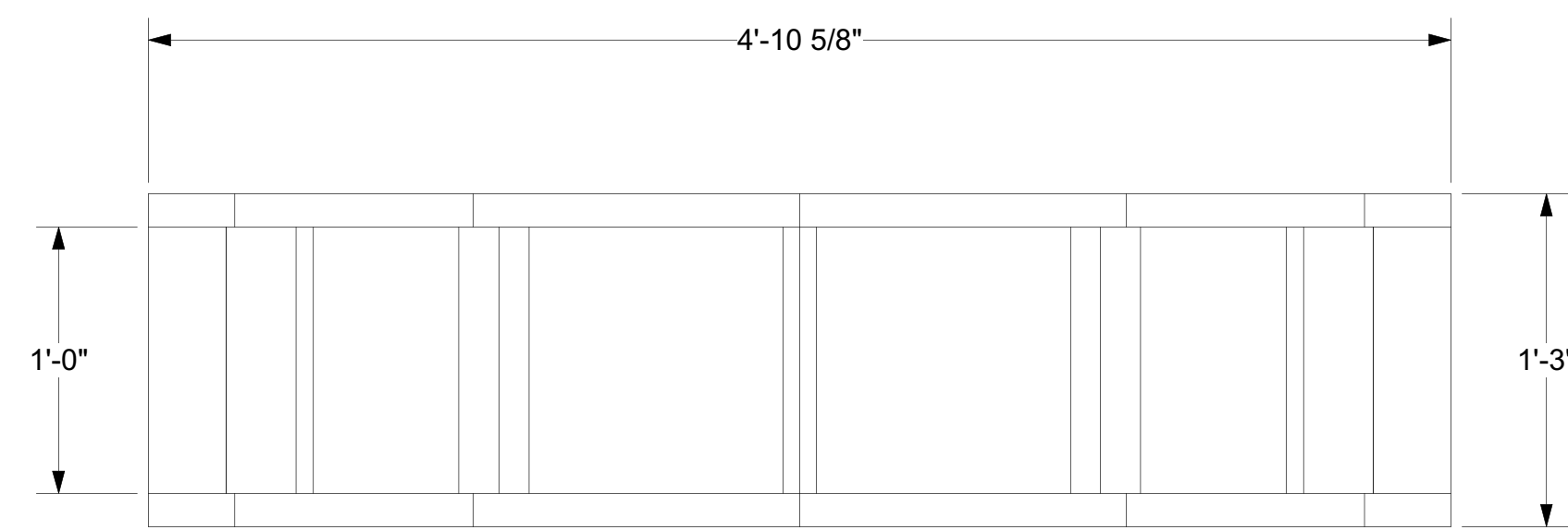
1. Track made from 2" x 2" x 1/8" Angle Iron
2. Hole are on 2'-0" centers typical.
3. Drill Holes using 25/64" Drill Bit
4. Grind smooth using Flapwheel
5. Maintain 5/16" spacing between pieces during Load-In

|                         |                           |
|-------------------------|---------------------------|
| <b>Summer and Smoke</b> |                           |
| SL Wagon Page 2         | Date : 7/24/2021          |
| Baker Theatre           | Scale : Per Unit          |
| Director : Sarah Yorke  | <b>Sht-12</b><br>OF<br>12 |
| Designer : Chris Rees   |                           |
| Revisions :             |                           |

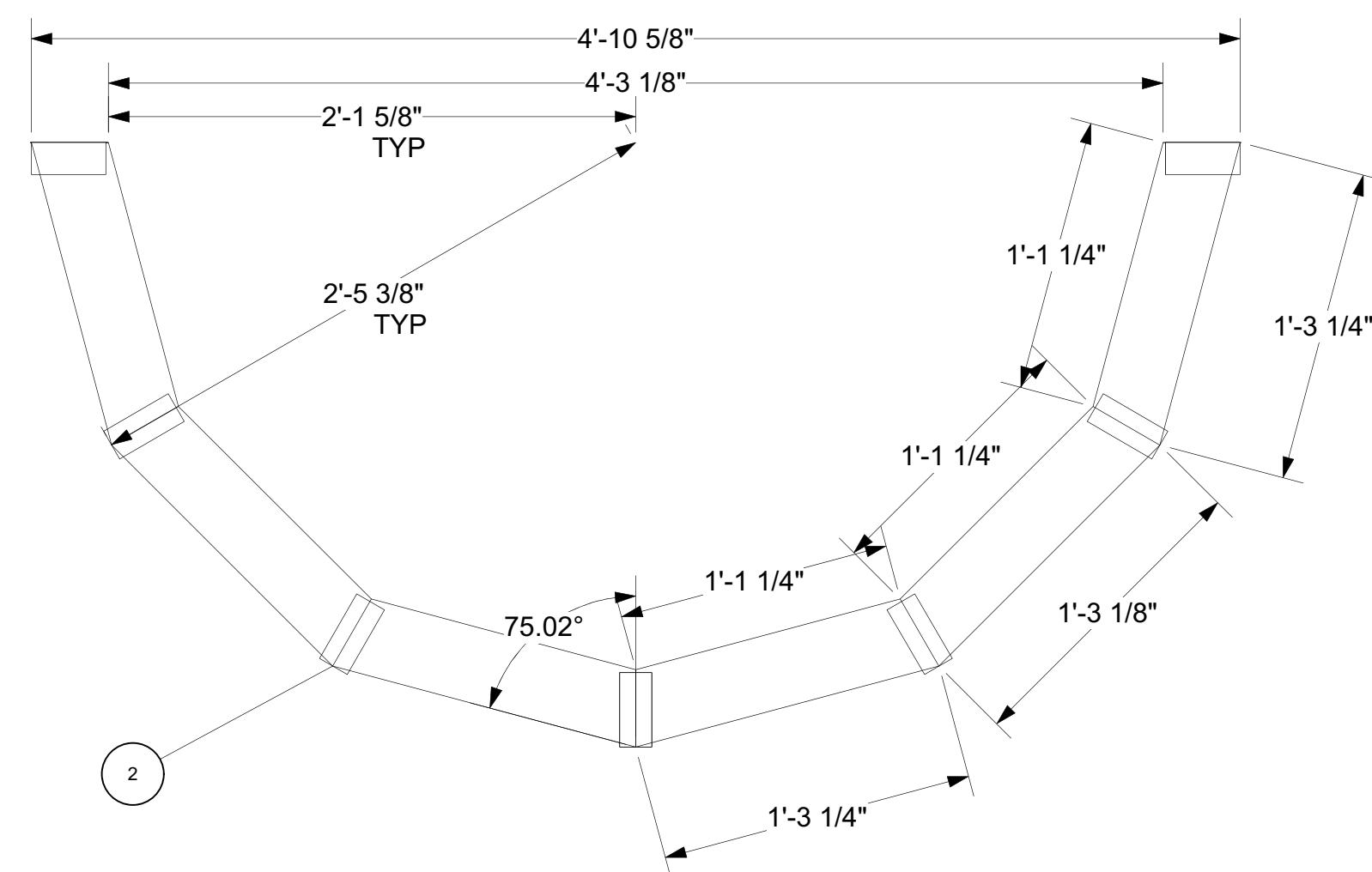


Fountain Base Scale: 2" = 1'-0"

- General Notes**
1. Wooden Frame topped with EVA Foam Insulation
  2. Hand-Carve EVA Foam to desired curve
  3. Bottom Molding made from halved pool noodles.

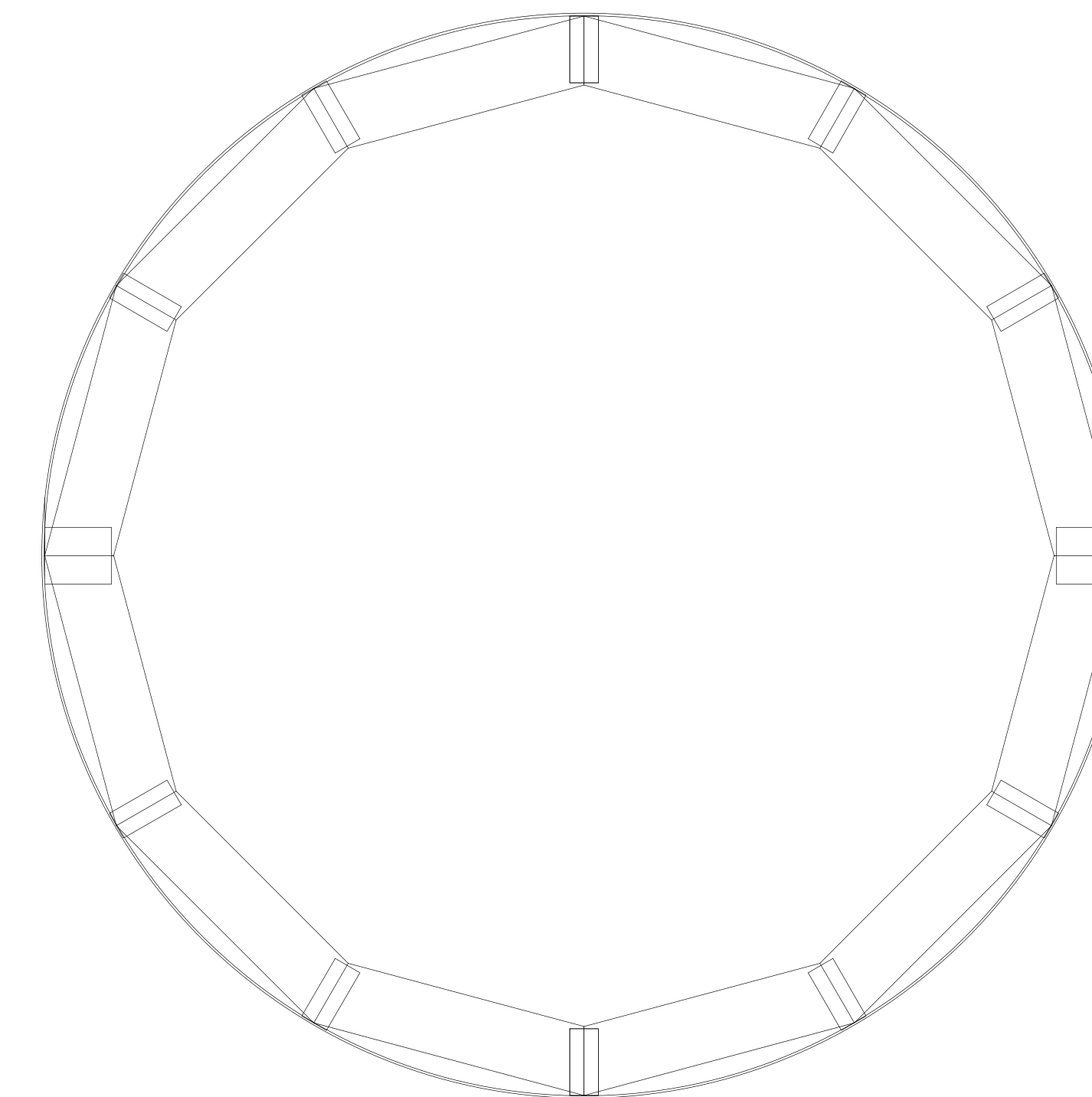


Fountain Base Frame Front View Scale: 1 1/2" = 1'-0"



Fountain Base Frame Detail Scale: 1 1/2" = 1'-0"

- General Notes**
1. Build 2 halves.
  2. Align vertical 2x4s with points of horizontal pieces, allowing vertical edges to slightly protrude - This will catch the masonite wrap.



Fountain Base Frame Top View Scale: 1 1/2" = 1'-0"

- Unit Notes**
1. Wrap frame with 1/8" thick masonite.

|                         |                           |
|-------------------------|---------------------------|
| <b>Summer and Smoke</b> |                           |
| Fountain Base           | Date : 7/24/2021          |
| Baker Theatre           | Scale : Per Unit          |
| Director : Sarah Yorke  | <b>Sht-13</b><br>OF<br>12 |
| Designer : Chris Rees   |                           |
| Revisions :             |                           |